

Recommended for ramen lovers!

Visit a metal bowl factory and eat ramen

Ramen taxi tour plan



We will guide you!



There are 5 major kinds of ramen in Niigata. Among them, pork back fat ramen is the soul food that has filled the stomachs of many people working in local industries. You can take a taxi tour to see the factory that produces the ideal metal bowl that is light, not too hot and keeps the soup temperature, created from the ultimate playfulness of ramen-loving workers. You can taste ramen, too.

Eat pork back fat ramen, one of the top 5 kinds of ramen, in a metal bowl!!



Tsubame pork back fat ramen

The characteristics of Tsubame pork back fat ramen when delivering it to factory workers in the city are thick noodles that stay in the stomach, salty soup right for factory workers who do heavy work and sweat, and the covering pork back fat to keep the soup from cooling.

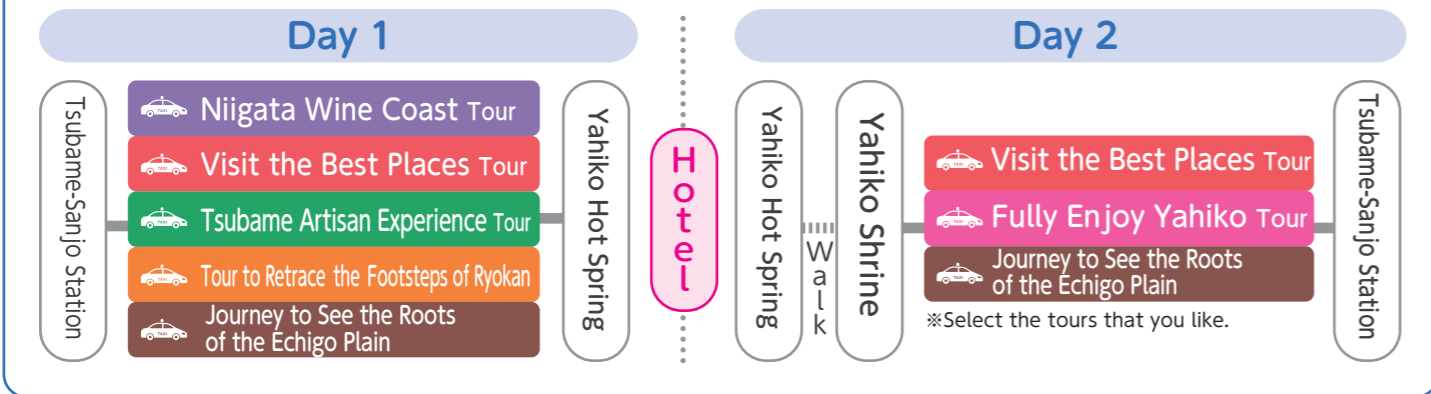
Fare **Special price ¥21,000/taxi (Tax included)** (Regular taxi that can fit up to 4 people) **Min. participants** Minimum of 1 person **Reservation deadline** 3 days before departure date ※Open on weekdays only



[Notes] ● Lunch is not included in the price. Please buy your own lunch. ● No tour conductor or guide will be on board. ● Please note that the time may change due to traffic conditions on the day. ● This is a sightseeing route. You cannot change your destination or stopover. If you wish to visit places not included in this route, there will be the normal charter fee. ● Regular work is done in factories. Please do not touch the products or enter areas other than designated areas because it is dangerous. ● No photographs inside the facilities. If you would like to take pictures, please check with the staff in charge. ● Smoking and drinking are prohibited inside the taxi. You are not allowed to take a tour under the influence of alcohol. ● Price includes taxi, guiding, and driver fees.

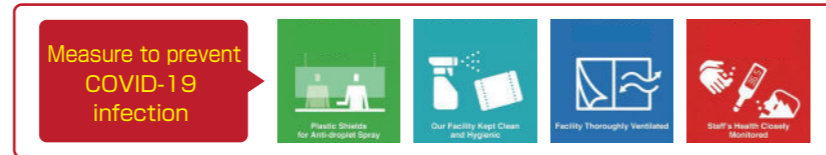
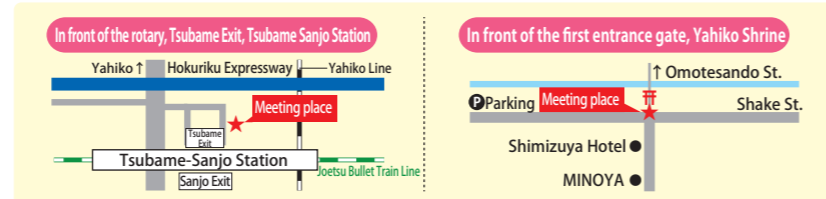


Example of using a sightseeing taxi 1 night 2 days



Information

- Regular or jumbo taxis will be used for sightseeing depending on the number of people booked.
- Itinerary times are approximate. They may change depending on the weather and traffic conditions.
- Please apply at least 3 days before departure. If you are staying close to Yahiko, Iwamuro or Tsubamesanjo, we accept reservations until 18:00 the day before except for Ramen taxi tourists.
- If a reservation is made the day before, a guide does not accompany you.
- All prices include tax.
- Business hours may change or end on account of the destination facilities.



Contact Operating company: **Chuetsu Traffic Co., Ltd.** Business hours: 9:00-17:00
1-9-5 Kitanyugura, Sanjo City, Niigata Prefecture

Phone: +81-(0)256-38-2021 Fax: +81-(0)256-38-8850

Planned by: Tsubame/Yahiko Wide Area Tourism Cooperation Meeting Project ※ Photos and illustrations are just sample images.

Travel at a reasonable price!



Travel around

May 2023 - February 2024
Minimum number of participants: 2



Tsubame and Yahiko in a chartered

sightseeing taxi

For more information



Price for one (Same price for adults and children, tax included) **¥5,000** Niigata Wine Coast Tour **¥5,500**

※ Photos and illustrations are just sample images.

The best of Tsubame, Yahiko, and Teradomari!

Visit the Best Places Tour



Tour Dates 2023 **Apr. 1 (Sat.) - Feb. 29 (Thu.)**
Please see the calendar below.

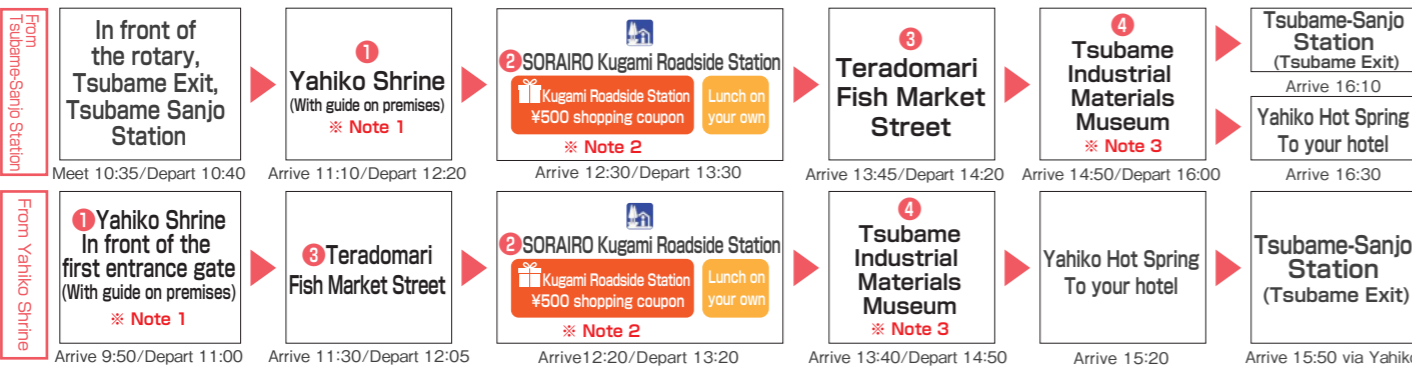
Min. participants 2 people (Reservations required 3 days in advance)
※ Reservations can be made the day before from the hotel. No tour guides.

Price Price for one **¥5,000** (Same price for adults and children, tax included)※ Lunch is not provided. (The fare is the same for getting on/off on the way. Entry fee to the Tsubame Industrial Materials Museum included.) (Free for infants, but no seats available for them)

Meeting place Time
From Tsubame-Sanjo Station In front of the rotary, Tsubame Exit, Tsubame Sanjo Station 10:35
From Yahiko Shrine In front of the first entrance gate, Yahiko Shrine 9:50



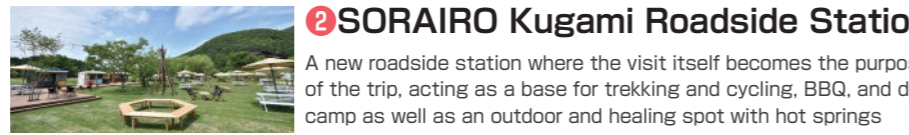
※ Scheduled times are approximate. The route may change depending on the weather and traffic that day.



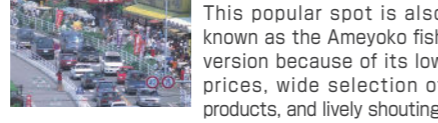
※ Note 1 : August 11 to 16 and November 1 to 24 (The Chrysanthemum Festival periods): No guides on these days. Enjoy walking around on your own.
 ※ Note 2 : SORAIRO Kugami Roadside Station: Receive Kugami's 500 yen shopping coupon
 ※ Note 3 : Additional charges for the experience at the Tsubame Industrial Materials Museum.



1 Yahiko Shrine
One of the best spiritual sites in Niigata Prefecture. The shrine has been called Oyahiko-sama since ancient times and is widely loved by many people.



2 SORAIRO Kugami Roadside Station
A new roadside station where the visit itself becomes the purpose of the trip, acting as a base for trekking and cycling, BBQ, and day camp as well as an outdoor and healing spot with hot springs



3 Teradomari Fish Market Street
This popular spot is also known as the Ameyoko fish version because of its low prices, wide selection of products, and lively shouting.



4 Tsubame Industrial Materials Museum
Introduces the history of Tsubame's 400 years of metalworking technology development since the Edo period. The works of living national treasures, a valuable collection of smoking pipes, and 5,000 spoons from all over the world are also on display.

Calendar Open day Tuesday - Sunday (Mondays and yearend/New Year holidays [12/22-1/4]: Closed)※ If Monday is a public holiday, we are open, but then closed on the following Tuesday.

April	May	June	July	August	September
Sun. Mon. Tue. Wed. Thu. Fri. Sat.	Sun. Mon. Tue. Wed. Thu. Fri. Sat.	Sun. Mon. Tue. Wed. Thu. Fri. Sat.	Sun. Mon. Tue. Wed. Thu. Fri. Sat.	Sun. Mon. Tue. Wed. Thu. Fri. Sat.	Sun. Mon. Tue. Wed. Thu. Fri. Sat.
1 2 3 4 5 6 7 8	1 2 3 4 5 6	1 2 3	1	1 2 3 4 5	1 2
9 10 11 12 13 14 15	7 8 9 10 11 12 13	4 5 6 7 8 9 10	2 3 4 5 6 7 8	6 7 8 9 10 11 12	3 4 5 6 7 8 9
16 17 18 19 20 21 22	14 15 16 17 18 19 20	11 12 13 14 15 16 17	9 10 11 12 13 14 15	13 14 15 16 17 18 19	10 11 12 13 14 15 16
23 24 25 26 27 28 29	21 22 23 24 25 26 27	18 19 20 21 22 23 24	16 17 18 19 20 21 22	20 21 22 23 24 25 26	17 18 19 20 21 22 23
29 30 31	28 29 30 31	25 26 27 28 29 30	23 24 25 26 27 28 29	27 28 29 30 31	24 25 26 27 28 29 30
October	November	December	January 2024	February 2024	
Sun. Mon. Tue. Wed. Thu. Fri. Sat.	Sun. Mon. Tue. Wed. Thu. Fri. Sat.	Sun. Mon. Tue. Wed. Thu. Fri. Sat.	Sun. Mon. Tue. Wed. Thu. Fri. Sat.	Sun. Mon. Tue. Wed. Thu. Fri. Sat.	
1 2 3 4 5 6 7	1 2 3 4	1 2	1 2 3 4 5 6	1 2 3	
8 9 10 11 12 13 14	5 6 7 8 9 10 11	3 4 5 6 7 8 9	7 8 9 10 11 12 13	4 5 6 7 8 9 10	
15 16 17 18 19 20 21	12 13 14 15 16 17 18	10 11 12 13 14 15 16	14 15 16 17 18 19 20	11 12 13 14 15 16 17	
22 23 24 25 26 27 28	19 20 21 22 23 24 25	17 18 19 20 21 22 23	21 22 23 24 25 26 27	18 19 20 21 22 23 24	
29 30 31	26 27 28 29 30	24 25 26 27 28 29 30	28 29 30 31	25 26 27 28 29	

※ Photos and illustrations are just sample images.

Why did rice growing and artisanship flourish in this area?

100 2022 marks the 100th anniversary of the Ohkouzu Diversion Channel

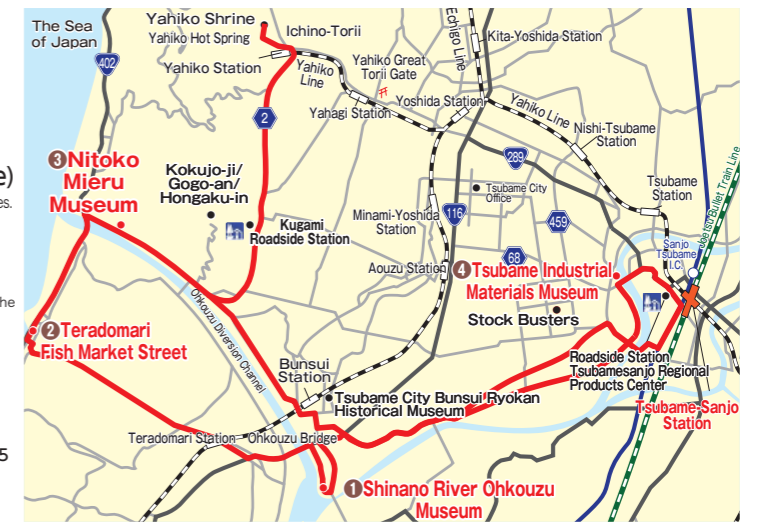
Journey to See the Roots of the Echigo Plain

Tour Dates 2023 **Apr. 1 (Sat.) - Feb. 29 (Thu.)**
Please see the calendar below.

Min. participants 2 people (Reservations required 3 days in advance)
※ Reservations can be made the day before from the hotel. No tour guides.

Price Price for one **¥5,000** (Same price for adults and children)※ Lunch is not provided. (The fare is the same for getting on/off on the way. Entry fee to the Tsubame Industrial Materials Museum included.) (Free for infants, but no seats available for them)

Meeting place Time
From Tsubame-Sanjo Station In front of the rotary, Tsubame Exit, Tsubame Sanjo Station 10:35
From Yahiko Shrine In front of the first entrance gate, Yahiko Shrine 10:35



※ Scheduled times are approximate. The route may change depending on the weather and traffic that day.



※ Note 1 : Depending on the reservation, a guide may not accompany the visitors at the Shinano River Ohkouzu Museum and Nitoko Mieru Museum.
 ※ Note 2 : Additional charges for the experience at the Tsubame Industrial Materials Museum.(Last entry at 16:00)



1 Shinano River Ohkouzu Museum
The Ohkouzu Diversion Channel is deeply related to Tsubame's industry and continues to protect the Echigo Plain even today. A trolley that was used 100 years ago is displayed here, and you can experience the Ohkouzu Diversion Channel with a realistic flood simulation. You can also enjoy a 360-degree view from the observation room on the 4th floor.



3 Nitoko Mieru Museum
Panels and videos provide an easy-to-understand introduction to the Ohkouzu Diversion Channel Renovation Project, a large-scale project to widen the estuary of the Ohkouzu Diversion Canal. Don't miss the Augmented Reality (AR) tablet that enables you to see the completed image when you hold it over the map.



4 Tsubame Industrial Materials Museum
You can do metalworking here, a rare experience in Japan. Become a Tsubame artisan and freely experience its artisanship such as pattern hammering on a pure copper tumbler using a hammer and sake cup production by shaping a sake cup.

Calendar Open day Tuesday - Sunday (Mondays and yearend/New Year holidays [12/22-1/4]: Closed)※ If Monday is a public holiday, we are open, but then closed on the following Tuesday.

April	May	June	July	August	September
Sun. Mon. Tue. Wed. Thu. Fri. Sat.	Sun. Mon. Tue. Wed. Thu. Fri. Sat.	Sun. Mon. Tue. Wed. Thu. Fri. Sat.	Sun. Mon. Tue. Wed. Thu. Fri. Sat.	Sun. Mon. Tue. Wed. Thu. Fri. Sat.	Sun. Mon. Tue. Wed. Thu. Fri. Sat.
1	1 2 3 4 5 6	1 2 3	1	1 2 3 4 5	1 2
2 3 4 5 6 7 8	7 8 9 10 11 12 13	4 5 6 7 8 9 10	2 3 4 5 6 7 8	6 7 8 9 10 11 12	3 4 5 6 7 8 9
9 10 11 12 13 14 15	14 15 16 17 18 19 20	11 12 13 14 15 16 17	9 10 11 12 13 14 15	13 14 15 16 17 18 19	10 11 12 13 14 15 16
16 17 18 19 20 21 22	21 22 23 24 25 26 27	18 19 20 21 22 23 24	16 17 18 19 20 21 22	20 21 22 23 24 25 26	17 18 19 20 21 22 23
23 24 25 26 27 28 29	28 29 30 31	25 26 27 28 29 30	23 24 25 26 27 28 29	27 28 29 30 31	24 25 26 27 28 29 30
October	November	December	January 2024	February 2024	
Sun. Mon. Tue. Wed. Thu. Fri. Sat.	Sun. Mon. Tue. Wed. Thu. Fri. Sat.	Sun. Mon. Tue. Wed. Thu. Fri. Sat.	Sun. Mon. Tue. Wed. Thu. Fri. Sat.	Sun. Mon. Tue. Wed. Thu. Fri. Sat.	
1 2 3 4 5 6 7	1 2 3 4	1 2	1 2 3 4 5 6	1 2 3	
8 9 10 11 12 13 14	5 6 7 8 9 10 11	3 4 5 6 7 8 9	7 8 9 10 11 12 13	4 5 6 7 8 9 10	
15 16 17 18 19 20 21	12 13 14 15 16 17 18	10 11 12 13 14 15 16	14 15 16 17 18 19 20	11 12 13 14 15 16 17	
22 23 24 25 26 27 28	19 20 21 22 23 24 25	17 18 19 20 21 22 23	21 22 23 24 25 26 27	18 19 20 21 22 23 24	
29 30 31	26 27 28 29 30	24 25 26 27 28 29 30	28 29 30 31	25 26 27 28 29	

※ Photos and illustrations are just sample images.

A fulfilling journey where you can see the history of artisanship!

Tsubame Artisan Experience Tour



Tour Dates 2023 Apr. 4 (Tue.) - Feb. 29 (Thu.)

Please see the calendar below.
 ※ If there are events, this tour will not be held.
 ※ Closed on factory holidays

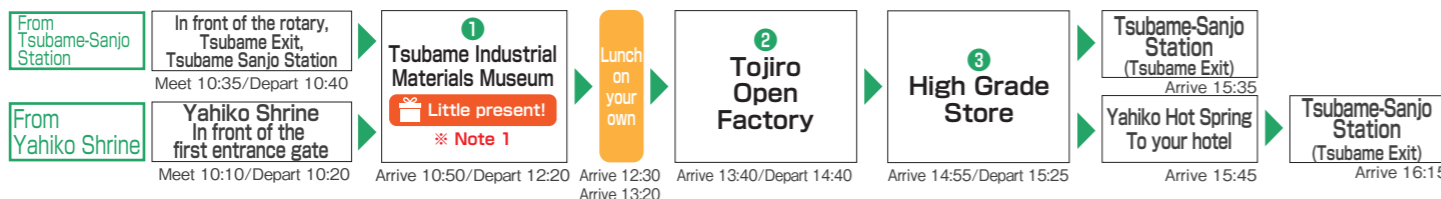
Min. participants 2 people (Reservations required 3 days in advance)
 ※ Reservations can be made the day before from the hotel.
 No tour guides.

Price Price for one (Same price for adults and children, tax included) ※ Lunch is not provided.
¥5,000 (The fare is the same for getting on/off on the way. Entry fee to the Tsubame Industrial Materials Museum included.)
 (Free for infants, but no seats available for them)

Meeting place Time
 From Tsubame-Sanjo Station In front of the rotary, Tsubame Exit, Tsubame Sanjo Station 10:35
 From Yahiko Shrine In front of the first entrance gate, Yahiko Shrine 10:10



※ Scheduled times are approximate. The route may change depending on the weather and traffic that day.



● Please do not touch the products in the factory. ● You cannot take a tour under the influence of alcohol.
 ※ Note 1: Additional charges for the experience at the Tsubame Industrial Materials Museum. ※ A little present is waiting for you at the Industrial Materials Museum.

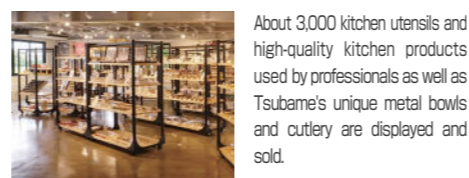


1 Tsubame Industrial Materials Museum [Experience]

- A** Pure copper tumbler hammering experience
 Experience time: about 30 minutes
 Make patterns by hammering on the surface of a pure copper tumbler and customize your own tumbler.
- B** Tin sake cup making experience
 Experience time: 30-40 minutes
 Make your own sake cup from a round tin plate, using a mallet.
- C** Oxidation coloring experience of a titanium spoon
 Experience time: 3-5 minutes
 Apply an electric current to titanium to create an oxide film which colors the titanium. The color of titanium varies depending on the voltage.

2 Tojiro Open Factory

A facility for touring a cutlery factory that handles integrated production of composite knives. The work process is open to visitors. A wide variety of knives for cooking, business use, and household use are displayed and sold.



3 High Grade Store - High Grade Store -

About 3,000 kitchen utensils and high-quality kitchen products used by professionals as well as Tsubame's unique metal bowls and cutlery are displayed and sold.

Calendar : Open day Tuesday - Friday (Closed on Mondays, weekends, national holidays, Obon [8/11-16], and yearend/New Year holidays [12/22-1/4]) ※ If there are events, this tour will not be held.

April							May							June							July							August							September																											
Sun.	Mon.	Tue.	Wed.	Thu.	Fri.	Sat.	Sun.	Mon.	Tue.	Wed.	Thu.	Fri.	Sat.	Sun.	Mon.	Tue.	Wed.	Thu.	Fri.	Sat.	Sun.	Mon.	Tue.	Wed.	Thu.	Fri.	Sat.	Sun.	Mon.	Tue.	Wed.	Thu.	Fri.	Sat.	Sun.	Mon.	Tue.	Wed.	Thu.	Fri.	Sat.																					
2	3	4	5	6	7	8	7	8	9	10	11	12	13	4	5	6	7	8	9	10	2	3	4	5	6	7	8	6	7	8	9	10	11	12	3	4	5	6	7	8	9	2	3	4	5	6	7	8	1	2	3	4	5	6	7							
9	10	11	12	13	14	15	14	15	16	17	18	19	20	11	12	13	14	15	16	17	9	10	11	12	13	14	15	13	14	15	16	17	18	19	10	11	12	13	14	15	16	16	17	18	19	20	21	22	17	18	19	20	21	22	23	23	24	25	26	27	28	29
23	24	25	26	27	28	29	28	29	30	31	25	26	27	28	29	30	23	24	25	26	27	28	29	27	28	29	30	31	17	18	19	20	21	22	23	24	25	26	27	28	29	30	24	25	26	27	28	29	30													



※ Photos and illustrations are just sample images.

Make the most of the historic sites and nature of Tsubame!

Tour to Retrace the Footsteps of Ryokan



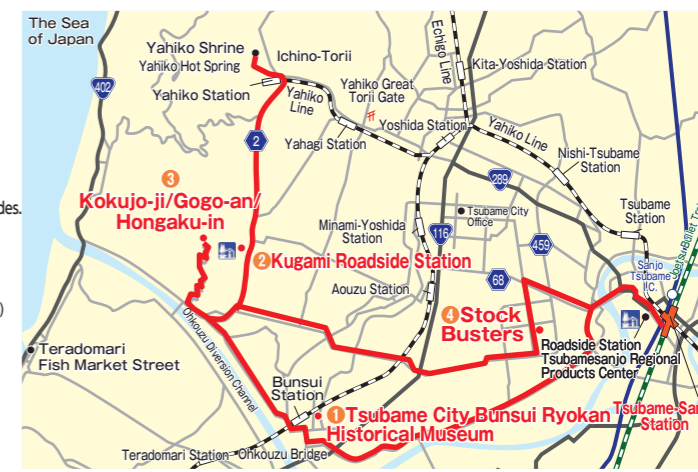
Tour Dates 2023 Apr. 1 (Sat.) - Nov. 30 (Thu.)

Please see the calendar below.

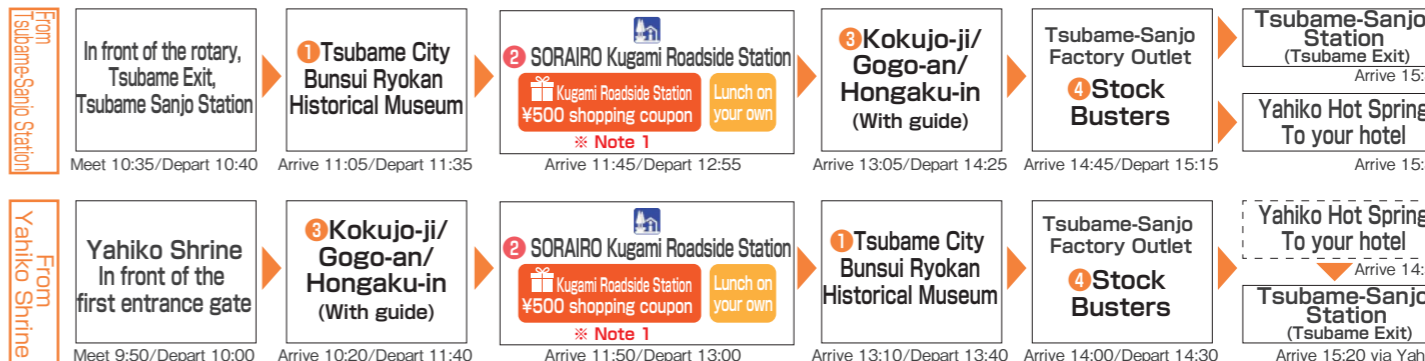
Min. participants 2 people (Reservations required 3 days in advance)
 ※ Reservations can be made the day before from the hotel. No tour guides.

Price Price for one (Same price for adults and children, tax included) ※ Lunch is not provided.
¥5,000 (Admission to the museum and Kokujo-ji Temple Treasure Hall included.)
 (Free for infants, but no seats available for them)

Meeting place Time
 From Tsubame-Sanjo Station In front of the rotary, Tsubame Exit, Tsubame Sanjo Station 10:35
 From Yahiko Shrine In front of the first entrance gate, Yahiko Shrine 9:50



※ Scheduled times are approximate. The route may change depending on the weather and traffic that day.



● There are mountain trails along the way. Please wear clothes and shoes that are easy to walk in. ● At Kokujo-ji Temple, Gogo-an and Hongaku-in, the Hachinoko-kai volunteer guide group will show you around.
 ※ Note 1: SORAIRO Kugami Roadside Station: Receive Kugami's 500 yen shopping coupon



1 Tsubame City Bunsui Ryokan Historical Museum

Relics, writings, and related materials of Ryokan when he lived in Gogo-an and in a hut at Otogo Shrine are on display. Ryokan loved poetry, songs, and calligraphy, was admired by people and lived in nature.



3 Kokujo-ji/Gogo-an/Hongaku-in

Kokujo-ji Temple: Founded in 709. The oldest temple in Echigo. Revered as the home of Yahiko Shrine.
 Gogo-an: A hermitage Ryokan stayed at after completing his pilgrimage and returning to Echigo. The name Gogo-an comes from Mangan Shonin, who rebuilt the main hall of Kokujo-ji Temple, having been supplied with five (go) cups of rice every day.
 Hongaku-in: A temple where Ryokan lived temporarily before settling down in Gogo-an.

Calendar : Open day Tuesday - Sunday

If Monday is a public holiday, we are open and then closed the following Tuesday (The Ryokan Historical Museum is closed).
 On the 2nd and 4th Tuesdays, except for in May and August, we are closed (Stock Busters is closed).

April							May							June							July									
Sun.	Mon.	Tue.	Wed.	Thu.	Fri.	Sat.	Sun.	Mon.	Tue.	Wed.	Thu.	Fri.	Sat.	Sun.	Mon.	Tue.	Wed.	Thu.	Fri.	Sat.	Sun.	Mon.	Tue.	Wed.	Thu.	Fri.	Sat.			
						1	1	2	3	4	5	6								1	2	3	2	3	4	5	6	7	8	
2	3	4	5	6	7	8	7	8	9	10	11	12	13	4	5	6	7	8	9	10	2	3	4	5	6	7	8			
9	10	11	12	13	14	15	14	15	16	17	18	19	20	11	12	13	14	15	16	17	9	10	11	12	13	14	15			
16	17	18	19	20	21	22	21	22	23	24	25	26	27	18	19	20	21	22	23	24	16	17	18	19	20	21	22			
23	24	25	26	27	28	29	28	29	30	31	25	26	27	28	29	30	23	24	25	26	27	28	29	23	24	25	26	27	28	29



4 Tsubame-Sanjo Factory Outlet Stock Busters

An outlet specialty store of manufacturers in the Tsubamesanjo area. Products that cannot be sold through regular routes, such as old models, can be purchased at extremely low prices.
 ※ Photos and illustrations are just sample images.

Fully feel the charm of Yahiko!

Fully Enjoy Yahiko Tour



Tour Dates 2023 Apr. 8 (Sat.) - Nov. 30 (Thu.)
Please see the calendar below.

Min. participants 2 people (Reservations required 3 days in advance)
* Reservations can be made the day before from the hotel. No tour guides.

Price Price for one (Same price for adults and children, tax included) * Lunch is not provided.
¥5,000 (The fare is the same for getting on/off on the way.)
(Free for infants, but no seats available for them)

Meeting place Time In front of the first entrance gate, Yahiko Shrine 9:50



* Scheduled times are approximate. The route may change depending on the weather and traffic that day.



- You can take a taxi to the summit. ● We may not head for the summit of Mt. Yahiko if the weather is bad.
- * Note 1: No guides from August 11-16 and November 1-24 (Chrysanthemum Festival periods). Enjoy on your own.
- * Note 2: Sightseers will pay for the ropeway round trip (¥1,500) and the ticket (¥500) for both the climbing car and Panorama Tower.
- * Note 3: The 500-yen Yahiko shopping coupon can be used at any of the Ropeway, Seigado, 59FU, and Yahiko Hospitality Square stores.
- * Note 4: Kominka Cafe 59FU is closed irregularly. Seats cannot be reserved on Saturdays, Sundays, and holidays. If there are no seats, we will guide you to other cafes.



2 Summit of Mt. Yahiko

Altitude 634m. A ropeway runs from the foot of the mountain to the summit. The 100m-high Panorama Tower at the top has an observatory that rotates 360 degrees as it rises, offering a magnificent view of the Sea of Japan and the Echigo Plains.

4 Hand-Hammering Studio Seigado

This workshop located at the foot of Mt. Yahiko uses Tsubame's traditional metal hammering techniques to create items from everyday tableware to metal arts. Enjoy the refined crafts made with their unique coloring technology.

5 Kominka Cafe 59FU

A stylish cafe with a modern Japanese taste. The large windows give a sense of openness. On sunny days you can enjoy viewing nature while dining on the terrace.

Yahiko Hospitality Square Recommended gourmet meals

Salmon Meal
A meal that uses fresh fish and specially cultivated Yahiko rice produced in Yahiko Village. Seafood rice bowls are also popular.

Fish Broth Sanuki Noodles
Available in the Hospitality Square, Udon noodles made with flying fish broth from Awashimaura Village, Niigata Prefecture, which has exchanges with Yahiko Village, using the Sanuki method of Kotohira Town, Kagawa Prefecture. Pork back fat noodles are also very popular!

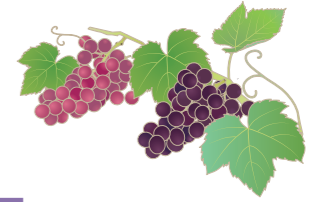
Miko Pyon Crepe
A crepe with the motif of Miko Pyon, which is Yahiko Village's mascot character. Available at CREPESHOP 3 o'clock in the Hospitality Square.

* Photos and illustrations are just sample images.

Calendar

April	May	June	July
Sun. Mon. Tue. Wed. Thu. Fri. Sat.	Sun. Mon. Tue. Wed. Thu. Fri. Sat.	Sun. Mon. Tue. Wed. Thu. Fri. Sat.	Sun. Mon. Tue. Wed. Thu. Fri. Sat.
1 2 3 4 5 6 7 8 9 10 11 12 13 14 15 16 17 18 19 20 21 22 23 24 25 26 27 28 29	1 2 3 4 5 6 7 8 9 10 11 12 13 14 15 16 17 18 19 20 21 22 23 24 25 26 27 28 29 30 31	1 2 3 4 5 6 7 8 9 10 11 12 13 14 15 16 17 18 19 20 21 22 23 24 25 26 27 28 29 30	1 2 3 4 5 6 7 8 9 10 11 12 13 14 15 16 17 18 19 20 21 22 23 24 25 26 27 28 29
August	September	October	November
Sun. Mon. Tue. Wed. Thu. Fri. Sat.	Sun. Mon. Tue. Wed. Thu. Fri. Sat.	Sun. Mon. Tue. Wed. Thu. Fri. Sat.	Sun. Mon. Tue. Wed. Thu. Fri. Sat.
1 2 3 4 5 6 7 8 9 10 11 12 13 14 15 16 17 18 19 20 21 22 23 24 25 26 27 28 29 30 31	1 2 3 4 5 6 7 8 9 10 11 12 13 14 15 16 17 18 19 20 21 22 23 24 25 26 27 28 29 30	1 2 3 4 5 6 7 8 9 10 11 12 13 14 15 16 17 18 19 20 21 22 23 24 25 26 27 28 29 30 31	1 2 3 4 5 6 7 8 9 10 11 12 13 14 15 16 17 18 19 20 21 22 23 24 25 26 27 28 29 30

Enjoy the famous winery area that spreads over Niigata Kakuda-hama Beach



Niigata Wine Coast Tour

Tour Dates 2023 Apr. 1 (Sat.) - Feb. 29 (Thu.)
Please see the calendar below.

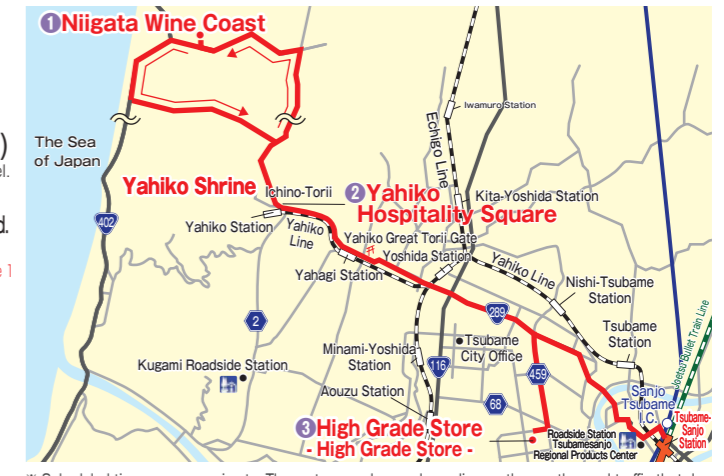
Min. participants 2 people (Reservations required 3 days in advance)
* Reservations can be made the day before from the hotel.

Price Price for one (Same price for adults and children, tax included) * Lunch is not provided.
Self-guided course **¥5,500** (Free for infants, but no seats available for them) * Note 1

Optional tour to a well-known winery CAVE D'OCCI WINERY tour

The following tours are also available for an additional fee. (Reservations required)
Wine tasting tour **¥2,200** (Tax included) * Minors cannot participate
Wine Tasting & Lunch Tour **¥5,500** (Tax included) * Minors and preschoolers cannot participate

Meeting place Time
From Tsubame-Sanjo Station: In front of the rotary, Tsubame Exit, Tsubame Sanjo Station 9:50
From Yahiko Shrine: In front of the first entrance gate, Yahiko Shrine 10:00
* Passengers using Iwamura Hot Springs can board on the way at each hotel in the Iwamura Hot Springs area (Departure 10:20).



* Scheduled times are approximate. The route may change depending on the weather and traffic that day.



- * Note 1: The self-guided tour is expected to become crowded. Please lunch early.
- * Note 2: The ¥500 Yahiko shopping coupon can be used at any store in the Yahiko Hospitality Plaza.



1 Niigata Wine Coast

Located at the foot of Mt. Kakuda, surrounded by the sea, mountains, and sand. CAVE D'OCCI and five unique wineries gather here and make wines, using the special soil. There are also many hot springs, restaurants, and hotels.

2 Hospitality Square

Opened in April 2018. Located almost in the center of Yahiko Hot Springs. There are a direct sales store, food court, and shops selling fruit sandwiches, crepes, and cream sodas. There is also a footbath and hand bath from the source of Yu-jinja Hot Spring.

3 High Grade Store - High Grade Store -

You can hold about 3,000 cooking utensils used by professionals. A large selection of metal sake cups unique to Tsubame are also available.

Calendar

April	May	June	July	August	September
Sun. Mon. Tue. Wed. Thu. Fri. Sat.	Sun. Mon. Tue. Wed. Thu. Fri. Sat.	Sun. Mon. Tue. Wed. Thu. Fri. Sat.	Sun. Mon. Tue. Wed. Thu. Fri. Sat.	Sun. Mon. Tue. Wed. Thu. Fri. Sat.	Sun. Mon. Tue. Wed. Thu. Fri. Sat.
1 2 3 4 5 6 7 8 9 10 11 12 13 14 15 16 17 18 19 20 21 22 23 24 25 26 27 28 29	1 2 3 4 5 6 7 8 9 10 11 12 13 14 15 16 17 18 19 20 21 22 23 24 25 26 27 28 29 30 31	1 2 3 4 5 6 7 8 9 10 11 12 13 14 15 16 17 18 19 20 21 22 23 24 25 26 27 28 29 30	1 2 3 4 5 6 7 8 9 10 11 12 13 14 15 16 17 18 19 20 21 22 23 24 25 26 27 28 29	1 2 3 4 5 6 7 8 9 10 11 12 13 14 15 16 17 18 19 20 21 22 23 24 25 26 27 28 29 30 31	1 2 3 4 5 6 7 8 9 10 11 12 13 14 15 16 17 18 19 20 21 22 23 24 25 26 27 28 29 30
October	November	December	January 2024	February 2024	
Sun. Mon. Tue. Wed. Thu. Fri. Sat.	Sun. Mon. Tue. Wed. Thu. Fri. Sat.	Sun. Mon. Tue. Wed. Thu. Fri. Sat.	Sun. Mon. Tue. Wed. Thu. Fri. Sat.	Sun. Mon. Tue. Wed. Thu. Fri. Sat.	
1 2 3 4 5 6 7 8 9 10 11 12 13 14 15 16 17 18 19 20 21 22 23 24 25 26 27 28 29 30 31	1 2 3 4 5 6 7 8 9 10 11 12 13 14 15 16 17 18 19 20 21 22 23 24 25 26 27 28 29 30	1 2 3 4 5 6 7 8 9 10 11 12 13 14 15 16 17 18 19 20 21 22 23 24 25 26 27 28 29 30 31	1 2 3 4 5 6 7 8 9 10 11 12 13 14 15 16 17 18 19 20 21 22 23 24 25 26 27 28 29 30 31	1 2 3 4 5 6 7 8 9 10 11 12 13 14 15 16 17 18 19 20 21 22 23 24 25 26 27 28 29	

* Photos and illustrations are just sample images.