

Travel at a reasonable price!



Travelaround

[April 2024~February 2025]
Minimum number of participants: 2



Tsubame and Yahiko in a chartered sightseeing taxi

Price for one
(Same price for adults and children, tax included)

¥5,000

Niigata Wine Coast Tour

¥5,500

For more information



The Best Places Niigata Tour

Yahiko Shrine



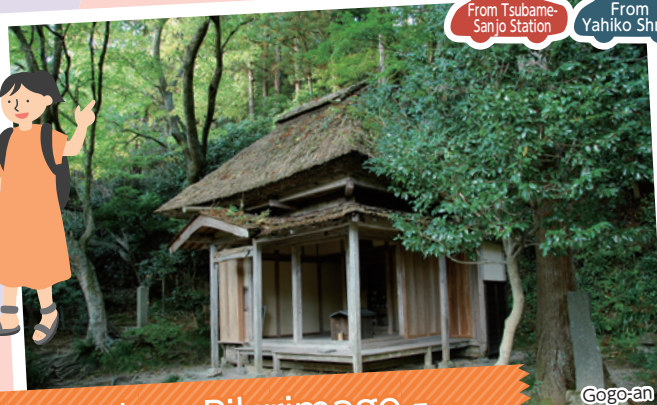
Ohkouchi Diversion Channel

The rich history of the Echigo Plain Tour



Tsubame Artisan Experience Tour

Tojiro Open Factory



Gogo-an

Ryokan Pilgrimage Tour



Fully Enjoy Yahiko Tour

Yahikoyama Ropeway



Niigata Wine Coast Tour

CAVE D'OCCI WINERY



※ Photos and illustrations are just sample images.

The best of Tsubame, Yahiko, and Teradomari!

The Best Places Niigata Tour

Tour Dates 2024 Apr.2(Tue.)-2025 Feb.28(Fri.)
Please see the calendar below.

Min. participants 2 people(Reservations required 3 days in advance)
※ Reservations can be made the day before from the hotel. No tour guides.

Price Price for one **¥5,000**
(Same price for adults and children, tax included)※ Lunch is not provided.
(The fare is the same for getting on/off on the way. Entry fee Tsubame Industrial Museum included.)
(Free for infants, but no seats available for them)

Meeting place Time
From Tsubamesanjo Station In front of the rotary, Tsubame Exit, Tsubamesanjo Station 10:35
From Yahiko Shrine In front of the first entrance gate, Yahiko Shrine 9:50



※ Scheduled times are approximate. The route may change depending on the weather and traffic that day.

From Tsubamesanjo Station	In front of the rotary, Tsubame Exit, Tsubamesanjo Station Meet 10:35/Depart 10:40	1 Yahiko Shrine (With guide on premises) ※ Note 1 Arrive 11:10/Depart 12:20	2 SORAIRO Kugami Roadside Station SORAIRO Kugami Roadside Station ¥500 shopping coupon Lunch on your own ※ Note 2 Arrive 12:30/Depart 13:30	3 Teradomari Fish Market Street Arrive 13:45/Depart 14:20	4 Tsubame Industrial Museum ※ Note 3 Arrive 14:50/Depart 16:00	Tsubamesanjo Station (Tsubame Exit) Arrive 16:10 Yahiko Hot Spring To your hotel Arrive 16:30
From Yahiko Shrine	1 In front of the first entrance gate, Yahiko Shrine ※ Note 1 Meet 9:50/Depart 11:00	3 Teradomari Fish Market Street Arrive 11:30/Depart 12:05	2 SORAIRO Kugami Roadside Station SORAIRO Kugami Roadside Station ¥500 shopping coupon Lunch on your own ※ Note 2 Arrive 12:20/Depart 13:20	4 Tsubame Industrial Museum ※ Note 3 Arrive 13:40/Depart 14:50	Yahiko Hot Spring To your hotel Arrive 15:20	Tsubamesanjo Station (Tsubame Exit) Arrive 15:50 via Yahiko

※ Note 1 : August 11 to 16 and November 1 to 24 (The Chrysanthemum Festival periods): No guides on these days. Enjoy walking around on your own.

※ Note 2 : SORAIRO Kugami Roadside Station: Receive Kugami's 500 yen shopping coupon.

※ Note 3 : Additional charges for the experience at Tsubame Industrial Museum.



1 Yahiko Shrine

A shrine of pre-eminence in Echigo with a history such that it appears in the ancient Manyoushu poetry text. circa 600-759AD



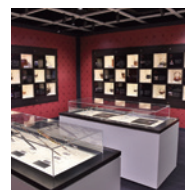
2 SORAIRO Kugami Roadside Station

This is a new type of roadside station that you can stay at, serving as a hub for trekking and cycling as well as an outdoor and healing spot with barbeque facilities, day camping, and hot spring facilities. Visiting the roadside station is the purpose of the trip in itself.



3 Teradomari Fish Market Street

This popular spot is also known as the Ameyoko fish version because of its low prices, wide selection of products, and lively shouting.



4 Tsubame Industrial Museum

Introduces the history of Tsubame's 400 years of metalworking techniques development since the Edo period. The works of living national treasures, a valuable collection of kiseru tobacco pipes, and 5,000 spoons from all over the world are also on display.

■ Calendar (Open day) Tuesday - Sunday (Mondays and yearend/New Year holidays [Dec.21-Jan.5]: Closed)※ If Monday is a public holiday, we are open, but then closed on the following Tuesday.

April	May	June	July	August	September
Sun. Mon. Tue. Wed. Thu. Fri. Sat. 1 2 3 4 5 6 7 8 9 10 11 12 13 14 15 16 17 18 19 20 21 22 23 24 25 26 27 28 29 30	Sun. Mon. Tue. Wed. Thu. Fri. Sat. 1 2 3 4 5 6 7 8 9 10 11 12 13 14 15 16 17 18 19 20 21 22 23 24 25 26 27 28 29 30 31	Sun. Mon. Tue. Wed. Thu. Fri. Sat. 1 2 3 4 5 6 7 8 9 10 11 12 13 14 15 16 17 18 19 20 21 22 23 24 25 26 27 28 29	Sun. Mon. Tue. Wed. Thu. Fri. Sat. 1 2 3 4 5 6 7 8 9 10 11 12 13 14 15 16 17 18 19 20 21 22 23 24 25 26 27 28 29 30 31	Sun. Mon. Tue. Wed. Thu. Fri. Sat. 1 2 3 4 5 6 7 8 9 10 11 12 13 14 15 16 17 18 19 20 21 22 23 24 25 26 27 28 29 30 31	Sun. Mon. Tue. Wed. Thu. Fri. Sat. 1 2 3 4 5 6 7 8 9 10 11 12 13 14 15 16 17 18 19 20 21 22 23 24 25 26 27 28 29 30
October	November	December	January 2025	February 2025	
Sun. Mon. Tue. Wed. Thu. Fri. Sat. 1 2 3 4 5 6 7 8 9 10 11 12 13 14 15 16 17 18 19 20 21 22 23 24 25 26 27 28 29 30 31	Sun. Mon. Tue. Wed. Thu. Fri. Sat. 1 2 3 4 5 6 7 8 9 10 11 12 13 14 15 16 17 18 19 20 21 22 23 24 25 26 27 28 29 30	Sun. Mon. Tue. Wed. Thu. Fri. Sat. 1 2 3 4 5 6 7 8 9 10 11 12 13 14 15 16 17 18 19 20 21 22 23 24 25 26 27 28 29 30 31	Sun. Mon. Tue. Wed. Thu. Fri. Sat. 1 2 3 4 5 6 7 8 9 10 11 12 13 14 15 16 17 18 19 20 21 22 23 24 25 26 27 28 29 30 31	Sun. Mon. Tue. Wed. Thu. Fri. Sat. 1 2 3 4 5 6 7 8 9 10 11 12 13 14 15 16 17 18 19 20 21 22 23 24 25 26 27 28	

※ Photos and illustrations are just sample images.

Why did rice growing and artisanship flourish in this area?



2022 marks the 100th anniversary of the Ohkouzu Diversion Channel

The rich history of the Echigo Plain Tour

Tour Dates 2024 **Apr.2(Tue.)-Feb.28(Fri.)**
Please see the calendar below.

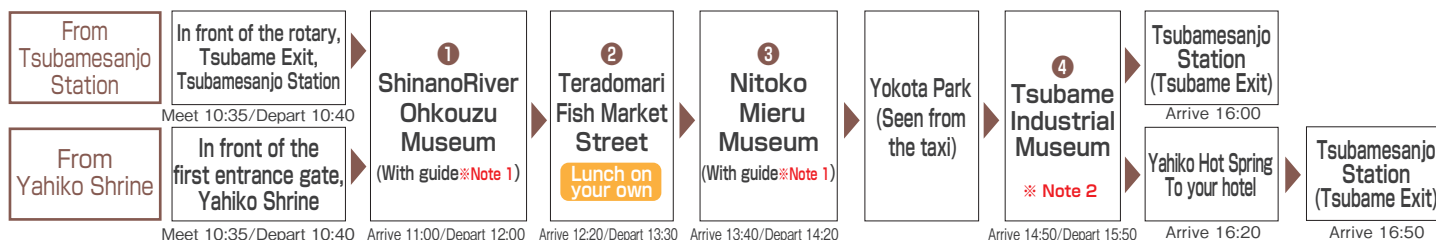
Min. participants 2 people (Reservations required 3 days in advance)
※ Reservations can be made the day before from the hotel. No tour guides.

Price Price for one **¥5,000**
(Same price for adults and children, tax included)※ Lunch is not provided.
(The fare is the same for getting on/off on the way. Entry fee Tsubame Industrial Museum included.)
(Free for infants, but no seats available for them)

Meeting place Time
From Tsubamesanjo Station In front of the rotary, Tsubame Exit, Tsubamesanjo Station 10:35
From Yahiko Shrine In front of the first entrance gate, Yahiko Shrine 10:35



※ Scheduled times are approximate. The route may change depending on the weather and traffic that day.



- ※ Note 1 : Depending on the reservation, a guide may not accompany the visitors at ShinanoRiver Ohkouzu Museum and Nitoko Mieru Museum.
- ※ Note 2 : Additional charges for the experience at Tsubame Industrial Museum.(Last entry at 16:00)



① ShinanoRiver Ohkouzu Museum

The Ohkouzu Diversion Channel is deeply related to Tsubame's industry and continues to protect the Echigo Plain even today. A trolley that was used 100 years ago is displayed here, and you can experience the Ohkouzu Diversion Channel with a realistic flood simulation. You can also enjoy a 360-degree view from the observation room on the 4th floor.



③ Nitoko Mieru Museum

Panels and videos provide an easy-to-understand introduction to the Ohkouzu Diversion Channel Renovation Project, a large-scale project to widen the estuary of the Ohkouzu Diversion Canal. Don't miss the Augmented Reality (AR) tablet that enables you to see the completed image when you hold it over the map.



④ Tsubame Industrial Museum

You can learn metalworking here, a rare experience even in Japan. Act like a Tsubame artisan and freely hammer patterns on a pure copper tumbler, or make a sake cup.

■ Calendar (Open day) Tuesday - Sunday (Mondays and year-end/New Year holidays [Dec.21-Jan.5]: Closed)※ If Monday is a public holiday, we are open, but then closed on the following Tuesday.

April	May	June	July	August	September
Sun. Mon. Tue. Wed. Thu. Fri. Sat.	Sun. Mon. Tue. Wed. Thu. Fri. Sat.	Sun. Mon. Tue. Wed. Thu. Fri. Sat.	Sun. Mon. Tue. Wed. Thu. Fri. Sat.	Sun. Mon. Tue. Wed. Thu. Fri. Sat.	Sun. Mon. Tue. Wed. Thu. Fri. Sat.
1 2 3 4 5 6	1 2 3 4	1	1 2 3 4 5 6	1 2 3	1 2 3 4 5 6 7
7 8 9 10 11 12 13	5 6 7 8 9 10 11	2 3 4 5 6 7 8	7 8 9 10 11 12 13	4 5 6 7 8 9 10	8 9 10 11 12 13 14
14 15 16 17 18 19 20	12 13 14 15 16 17 18	9 10 11 12 13 14 15	14 15 16 17 18 19 20	11 12 13 14 15 16 17	15 16 17 18 19 20 21
21 22 23 24 25 26 27	19 20 21 22 23 24 25	16 17 18 19 20 21 22	21 22 23 24 25 26 27	18 19 20 21 22 23 24	22 23 24 25 26 27 28
28 29 30	26 27 28 29 30 31	23 24 25 26 27 28 29	28 29 30 31	25 26 27 28 29 30 31	29 30
October	November	December	January 2025	February 2025	
Sun. Mon. Tue. Wed. Thu. Fri. Sat.	Sun. Mon. Tue. Wed. Thu. Fri. Sat.	Sun. Mon. Tue. Wed. Thu. Fri. Sat.	Sun. Mon. Tue. Wed. Thu. Fri. Sat.	Sun. Mon. Tue. Wed. Thu. Fri. Sat.	
1 2 3 4 5	1 2	1 2 3 4 5 6 7	1 2 3 4	1	
6 7 8 9 10 11 12	3 4 5 6 7 8 9	8 9 10 11 12 13 14	5 6 7 8 9 10 11	2 3 4 5 6 7 8	
13 14 15 16 17 18 19	10 11 12 13 14 15 16	15 16 17 18 19 20 21	12 13 14 15 16 17 18	9 10 11 12 13 14 15	
20 21 22 23 24 25 26	17 18 19 20 21 22 23	22 23 24 25 26 27 28	19 20 21 22 23 24 25	16 17 18 19 20 21 22	
27 28 29 30 31	24 25 26 27 28 29 30	29 30 31	26 27 28 29 30 31	23 24 25 26 27 28	



※ Photos and illustrations are just sample images.

A fulfilling journey where you can see
the history of artisanship!

Tsubame Artisan Experience Tour

Tour Dates

2024 Apr.2(Tue.)-Feb.28(Fri.)

Please see the calendar below.

※ If there are events, this tour will not be held.

※ Closed on factory holidays

Min. participants

2 people (Reservations required 3 days in advance)

※ Reservations can be made the day before from the hotel.
No tour guides.

Price

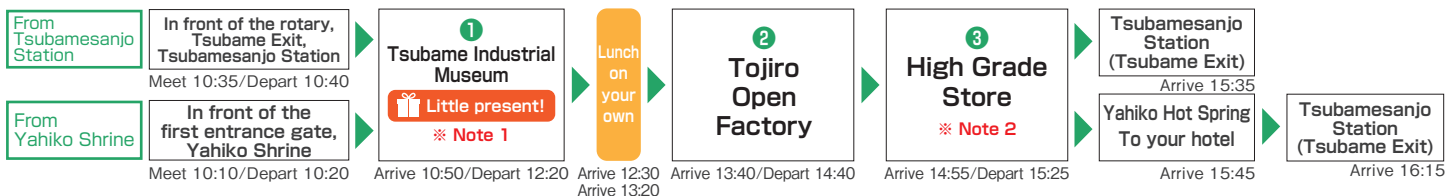
Price for one (Same price for adults and children, tax included)※ Lunch is not provided.
¥5,000 (The fare is the same for getting on/off on the way. Entry fee to Tsubame Industrial Museum included.)
(Free for infants, but no seats available for them)

Meeting place Time

From Tsubamesanjo Station In front of the rotary, Tsubame Exit, Tsubamesanjo Station 10:35
From Yahiko Shrine In front of the first entrance gate, Yahiko Shrine 10:10



※ Scheduled times are approximate. The route may change depending on the weather and traffic that day.



● Please do not touch the products in the factory. ● You cannot take a tour under the influence of alcohol.

※ Note 1: Additional charges for the experience at Tsubame Industrial Museum. ※ A little present is waiting for you at the Museum.

※ Note 2: We offer shopping benefits.



1 Tsubame Industrial Museum [Experience]

A Pure copper tumbler hammering experience

Experience time:
about 30 minutes

Make patterns by hammering on the surface of a pure copper tumbler and customize your own tumbler.



B Tin sake cup making experience

Experience time:
30-40 minutes

Make your own sake cup from a round tin plate, using mallets.



C Oxidation coloring experience of a titanium spoon

Experience time:
3-5 minutes

Apply an electric current to titanium to create an oxide film which colors the titanium. The color of titanium varies depending on the voltage.



2 Tojiro Open Factory

A facility for touring a cutlery factory that handles integrated production of composite knives. The work process is open to visitors. A wide variety of knives for cooking, business use, and household use are displayed and sold.



3 High Grade Store

About 3,000 kitchen utensils and high-quality kitchen products used by professionals as well as Tsubame's unique metal bowls and cutlery are displayed and sold.

■ Calendar (Orange box: Open day) Tuesday - Friday (Closed on Mondays, weekends, national holidays, Obon [Aug.11-16], and yearend/New Year holidays [Dec.21-Jan.5])※ If there are events, this tour will not be held.

April	May	June	July	August	September
Sun. Mon. Tue. Wed. Thu. Fri. Sat.	Sun. Mon. Tue. Wed. Thu. Fri. Sat.	Sun. Mon. Tue. Wed. Thu. Fri. Sat.	Sun. Mon. Tue. Wed. Thu. Fri. Sat.	Sun. Mon. Tue. Wed. Thu. Fri. Sat.	Sun. Mon. Tue. Wed. Thu. Fri. Sat.
1 2 3 4 5 6	1 2 3 4	1	1 2 3 4 5 6	1 2 3	1 2 3 4 5 6 7
7 8 9 10 11 12 13	5 6 7 8 9 10 11	2 3 4 5 6 7 8	7 8 9 10 11 12 13	4 5 6 7 8 9 10	8 9 10 11 12 13 14
14 15 16 17 18 19 20	12 13 14 15 16 17 18	9 10 11 12 13 14 15	14 15 16 17 18 19 20	11 12 13 14 15 16 17	15 16 17 18 19 20 21
21 22 23 24 25 26 27	19 20 21 22 23 24 25	16 17 18 19 20 21 22	21 22 23 24 25 26 27	18 19 20 21 22 23 24	22 23 24 25 26 27 28
28 29 30	26 27 28 29 30 31	23 24 25 26 27 28 29	28 29 30 31	25 26 27 28 29 30 31	29 30
October	November	December	January 2025	February 2025	
Sun. Mon. Tue. Wed. Thu. Fri. Sat.	Sun. Mon. Tue. Wed. Thu. Fri. Sat.	Sun. Mon. Tue. Wed. Thu. Fri. Sat.	Sun. Mon. Tue. Wed. Thu. Fri. Sat.	Sun. Mon. Tue. Wed. Thu. Fri. Sat.	
1 2 3 4 5	1 2	1 2 3 4 5 6 7	1 2 3 4	1	
6 7 8 9 10 11 12	3 4 5 6 7 8 9	8 9 10 11 12 13 14	5 6 7 8 9 10 11	2 3 4 5 6 7 8	
13 14 15 16 17 18 19	10 11 12 13 14 15 16	15 16 17 18 19 20 21	12 13 14 15 16 17 18	9 10 11 12 13 14 15	
20 21 22 23 24 25 26	17 18 19 20 21 22 23	22 23 24 25 26 27 28	19 20 21 22 23 24 25	16 17 18 19 20 21 22	
27 28 29 30 31	24 25 26 27 28 29 30	29 30 31	26 27 28 29 30 31	23 24 25 26 27 28	



※ Photos and illustrations are just sample images.

Make the most of the historic sites
and nature of Tsubame!

Ryokan Pilgrimage Tour



Tour Dates

2024
Apr. 2 (Thu.) - Nov. 30 (Sat.)
Please see the calendar below.

Min. participants

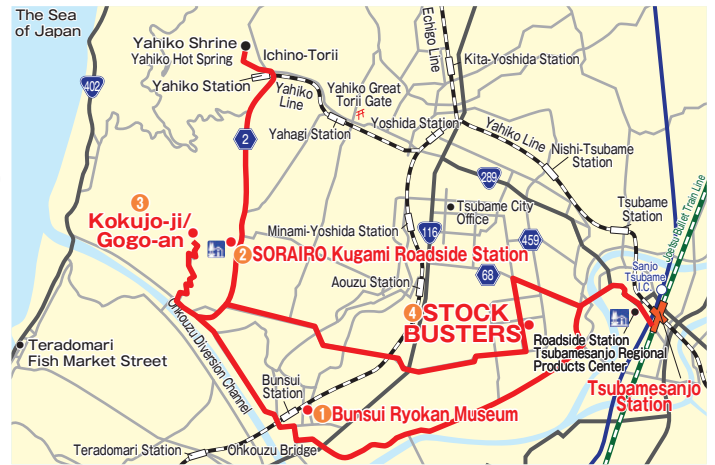
2 people (Reservations required 3 days in advance)
※ Reservations can be made the day before from the hotel. No tour guides.

Price

Price for one (Same price for adults and children, tax included) ※ Lunch is not provided.
¥5,000 (Admission to the museum and Kokujo-ji Temple Treasure Hall included)
(Free for infants, but no seats available for them)

Meeting place Time

From Tsubamesanjo Station
In front of the rotary, Tsubame Exit, Tsubamesanjo Station 10:35
From Yahiko Shrine
In front of the first entrance gate, Yahiko Shrine 9:50



※ Scheduled times are approximate. The route may change depending on the weather and traffic that day.

From Tsubamesanjo Station	In front of the rotary, Tsubame Exit, Tsubamesanjo Station Meet 10:35/Depart 10:40	➔	1 Bunsui Ryokan Museum Arrive 11:05/Depart 11:35	➔	2 SORAIRO Kugami Roadside Station SORAIRO Kugami Roadside Station ¥500 shopping coupon Lunch on your own ※ Note 1 Arrive 11:45/Depart 12:55	➔	3 Kokujo-ji Temple/Gogo-an (With guide) Arrive 13:05/Depart 14:25	➔	Tsubame-Sanjo Factory Outlet 4 STOCK BUSTERS Arrive 14:45/Depart 15:15	➔	Tsubamesanjo Station (Tsubame Exit) Arrive 15:30 Yahiko Hot Spring To your hotel
From Yahiko Shrine	In front of the first entrance gate, Yahiko Shrine Meet 9:50/Depart 10:00	➔	3 Kokujo-ji Temple/Gogo-an (With guide) Arrive 10:20/Depart 11:40	➔	2 SORAIRO Kugami Roadside Station SORAIRO Kugami Roadside Station ¥500 shopping coupon Lunch on your own ※ Note 1 Arrive 11:50/Depart 13:00	➔	1 Bunsui Ryokan Museum Arrive 13:10/Depart 13:40	➔	Tsubame-Sanjo Factory Outlet 4 STOCK BUSTERS Arrive 14:00/Depart 14:30	➔	Yahiko Hot Spring To your hotel Arrive 14:50 Tsubamesanjo Station (Tsubame Exit) Arrive 15:20 via Yahiko

● There are mountain trails along the way. Please wear clothes and shoes that are easy to walk in. ● At Kokujo-ji Temple and Gogo-an, Hachinoko-kai volunteer guide group will show you around.

※ Note 1: You can use SORAIRO Kugami Roadside Station shopping coupon at the product sales areas and restaurants.



1 Bunsui Ryokan Museum

Relics, writings, and related materials of Ryokan when he lived in Gogo-an and in a hut at Otago Shrine are on display. Ryokan who loved poetry, songs, and calligraphy, was admired by people and lived in nature. At special exhibitions in spring and autumn, nationally and prefecturally designated cultural properties are displayed here.

3 Kokujo-ji Temple/Gogo-an

Kokujo-ji Temple: Founded in 709. The oldest temple in Echigo. Revered as the home of Yahiko Shrine.

Gogo-an: A hermitage Ryokan stayed at after completing his pilgrimage and returning to Echigo. The name Gogo-an comes from Mangan Shonin, who rebuilt the main hall of Kokujo-ji Temple, having been supplied with five (go) cups of rice every day.

Calendar

Open day

Tuesday - Sunday

If Monday is a public holiday, we are open and then closed the following Tuesday (The Bunsui Ryokan Museum is closed).
On the 2nd and 4th Tuesdays, except for in May and August, we are closed (Stock Busters is closed).

April	May	June	July
Sun. Mon. Tue. Wed. Thu. Fri. Sat.	Sun. Mon. Tue. Wed. Thu. Fri. Sat.	Sun. Mon. Tue. Wed. Thu. Fri. Sat.	Sun. Mon. Tue. Wed. Thu. Fri. Sat.
1 2 3 4 5 6	1 2 3 4	1	1 2 3 4 5 6
7 8 9 10 11 12 13	5 6 7 8 9 10 11	2 3 4 5 6 7 8	7 8 9 10 11 12 13
14 15 16 17 18 19 20	12 13 14 15 16 17 18	9 10 11 12 13 14 15	14 15 16 17 18 19 20
21 22 23 24 25 26 27	19 20 21 22 23 24 25	16 17 18 19 20 21 22	21 22 23 24 25 26 27
28 29 30	26 27 28 29 30 31	23 24 25 26 27 28 29	28 29 30 31
August	September	October	November
Sun. Mon. Tue. Wed. Thu. Fri. Sat.	Sun. Mon. Tue. Wed. Thu. Fri. Sat.	Sun. Mon. Tue. Wed. Thu. Fri. Sat.	Sun. Mon. Tue. Wed. Thu. Fri. Sat.
1 2 3	1 2 3 4 5 6 7	1 2 3 4 5	1 2
4 5 6 7 8 9 10	8 9 10 11 12 13 14	6 7 8 9 10 11 12	3 4 5 6 7 8 9
11 12 13 14 15 16 17	15 16 17 18 19 20 21	13 14 15 16 17 18 19	10 11 12 13 14 15 16
18 19 20 21 22 23 24	22 23 24 25 26 27 28	20 21 22 23 24 25 26	17 18 19 20 21 22 23
25 26 27 28 29 30 31	29 30	27 28 29 30 31	24 25 26 27 28 29 30



4 Tsubame-Sanjo Factory Outlet STOCK BUSTERS

An outlet store that sells products at extremely low prices. They handle old models from trade firms and manufacturers in the Tsubame-Sanjo area that cannot be sold through regular routes.

※ Photos and illustrations are just sample images.

Fully feel the charm of Yahiko!

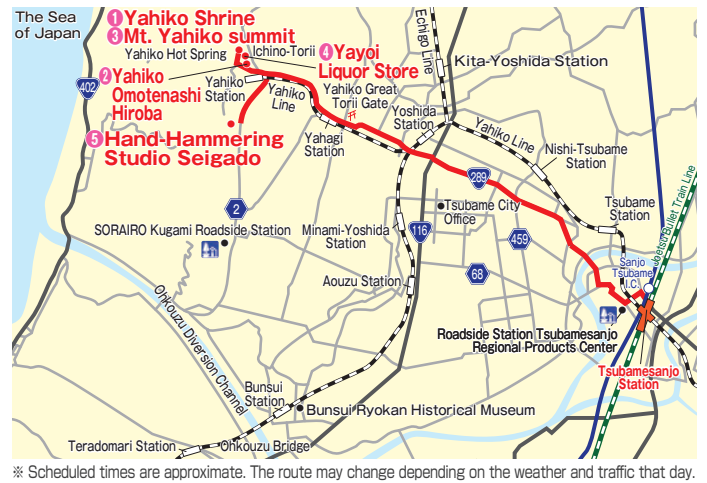
Fully Enjoy Yahiko Tour

Tour Dates 2024 **Apr. 1 (Mon.) - Nov. 30 (Sat.)**
Please see the calendar below.

Min. participants **2 people**(Reservations required 3 days in advance)
※ Reservations can be made the day before from the hotel. No tour guides.

Price Price for one (Same price for adults and children, tax included)※ Lunch is not provided.
¥5,000 (The fare is the same for getting on/off on the way.)
(Free for infants, but no seats available for them)

Meeting place Time
From Tsubamesanjo Station In front of the rotary, Tsubame Exit, Tsubamesanjo Station 10:35
From Yahiko Shrine In front of the first entrance gate, Yahiko Shrine 9:50



From Tsubamesanjo Station	In front of the rotary, Tsubame Exit, Tsubamesanjo Station Meet 10:35/Depart 10:40	1 Yahiko Shrine (With guide on premises) ※ Note 1 Arrive 11:10/Depart 12:20	2 Omotenashi Hiroba Yahiko's ¥500 shopping coupon Usage limited to that day & the next Lunch on your own ※ Note 2 Arrive 12:25/Depart 13:25	3 Summit of Mt. Yahiko Enjoy the Climbing Car on the ropeway on your return trip. ※ Note 3 Arrive 13:55/Depart 14:45	4 Yayoi Liquor Store ※ Note 4 Arrive 15:10/Depart 15:40	5 Hand-Hammering Studio Seigado Arrive 15:45/Depart 16:15	Tsubamesanjo Station (Tsubame Exit) Arrive 16:45 Yahiko Hot Spring To your hotel Arrive 16:25
From Yahiko Shrine	1 In front of the first entrance gate, Yahiko Shrine ※ Note 1 Meet 9:50/Depart 11:00	3 Summit of Mt. Yahiko Enjoy the Climbing Car on the ropeway on your outbound trip. ※ Note 3 Arrive 11:20/Depart 12:10	2 Omotenashi Hiroba Yahiko's ¥500 shopping coupon Usage limited to that day & the next Lunch on your own ※ Note 2 Arrive 12:40/Depart 14:00	5 Hand-Hammering Studio Seigado Arrive 14:05/Depart 14:35	4 Yayoi Liquor Store ※ Note 4 Arrive 14:40/Depart 15:10	Yahiko Hot Spring To your hotel Arrive 15:15	Tsubamesanjo Station (Tsubame Exit) Arrive 15:45

※ Note 1: August 11 to 16 (Obon period) and November 1 to 24 (The Chrysanthemum Festival period): No guides available on these days. Enjoy walking around on your own.
※ Note 2: The 500-yen Yahiko shopping coupon can be used at the Ropeway, Seigado, Yayoi Liquor Store, or Omotenashi Hiroba.
※ Note 3: The ropeway and Climbing Car fee are to be paid by the visitors (800 yen + 220 yen = 1,020 yen in total).
※ Note 4: Alcoholic tasting is available for a fee. It may be temporarily closed at times.

● Based on your preferences, you can also take a cab to the top of the mountain.
● The tour may not go to the summit due to inclement weather.



3 Summit of Mt. Yahiko

Altitude 634m. A ropeway runs from the foot of the mountain to the summit. The 100m-high Panorama Tower at the top has an observatory that rotates 360 degrees as it rises, offering a magnificent view of the Sea of Japan and the Echigo Plain.

4 Yayoi Liquor Store

The well-stocked local beverage specialist offers around 300 varieties of locally-brewed Niigata sake and authentic shochu (distilled spirits), as well as craft beer made with Niigata Prefecture's agricultural products for take-out.

5 Hand-Hammering Studio Seigado

This workshop located at the foot of Mt. Yahiko uses Tsubame's traditional metal hammering techniques to create items from everyday tableware to metal arts. Enjoy the refined crafts made with their unique coloring techniques.

■ Calendar Open day Thursday - Tuesday

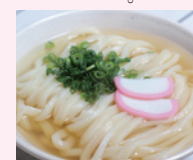
※ Every Wednesday, we are closed (Yayoi Liquor Store is closed).

April	May	June	July
Sun. 1 2 3 4 5 6 Mon. 7 8 9 10 11 12 13 Tue. 14 15 16 17 18 19 20 Wed. 21 22 23 24 25 26 27 Thu. 28 29 30	Sun. 1 2 3 4 Mon. 5 6 7 8 9 10 11 Tue. 12 13 14 15 16 17 18 Wed. 19 20 21 22 23 24 25 Thu. 26 27 28 29 30 31	Sun. 1 Mon. 2 3 4 5 6 7 8 Tue. 9 10 11 12 13 14 15 Wed. 16 17 18 19 20 21 22 Thu. 23 24 25 26 27 28 29	Sun. 1 2 3 4 5 6 Mon. 7 8 9 10 11 12 13 Tue. 14 15 16 17 18 19 20 Wed. 21 22 23 24 25 26 27 Thu. 28 29 30 31
August	September	October	November
Sun. 1 2 3 Mon. 4 5 6 7 8 9 10 Tue. 11 12 13 14 15 16 17 Wed. 18 19 20 21 22 23 24 Thu. 25 26 27 28 29 30 31	Sun. 1 2 3 4 5 6 7 Mon. 8 9 10 11 12 13 14 Tue. 15 16 17 18 19 20 21 Wed. 22 23 24 25 26 27 28 Thu. 29 30	Sun. 1 2 3 4 5 Mon. 6 7 8 9 10 11 12 Tue. 13 14 15 16 17 18 19 Wed. 20 21 22 23 24 25 26 Thu. 27 28 29 30 31	Sun. 1 2 Mon. 3 4 5 6 7 8 9 Tue. 10 11 12 13 14 15 16 Wed. 17 18 19 20 21 22 23 Thu. 24 25 26 27 28 29 30

Recommended gourmet meals

Fish Broth Sanuki Noodles

Available in Omotenashi Hiroba. Udon noodles made with flying fish broth from Awashimura Village, Niigata which has exchanges with Yahiko Village, made with the traditional Sanuki method from Kagawa.



Miko Pyon Crepe

A crepe with the motif of Miko Pyon, which is Yahiko Village's mascot character. Available at CREPESHOP 3 o'clock in Omotenashi Hiroba.



※ Photos and illustrations are just sample images.

Enjoy the famous winery area that spreads over
Niigata Kakuda-hama Beach

Niigata Wine Coast Tour

Tour Dates 2024 **Apr. 1 (Mon.) - Feb. 28 (Fri.)**
Please see the calendar below.

Min. participants **2 people** (Reservations required 3 days in advance)
※ Reservations can be made the day before from the hotel.

Price Price for one (Same price for adults and children, tax included)※ Lunch is not provided.
Self-guided course **¥5500** (Free for infants, but no seats available for them) ※ Note 1

Optional tour to a well-known winery CAVE D'OCCI WINERY tour

The following tours are also available for an additional fee. (Reservations required)

Wine tasting Tour ¥2200 (Tax included) ※ Minors cannot participate	Lunch Tour ¥5500 (Tax included) ※ Minors and preschoolers cannot participate	※ Option prices are subject to change.
---	---	--

Meeting place Time

From Tsubamesanjo Station	In front of the rotary, Tsubame Exit, Tsubamesanjo Station 9:50
From Yahiko Shrine	In front of the first entrance gate, Yahiko Shrine 10:00

※ Passengers using Iwamuro Hot Springs can board on the way at each hotel in the Iwamuro Hot Springs area (Departure 10:20).

From Tsubamesanjo Station

In front of the rotary, Tsubame Exit, Tsubamesanjo Station
Meet 9:50/Depart 10:00

Via Iwamuro Hot Springs Uwasekigata

1 Niigata Wine Coast

CAVE D'OCCI WINERY tour

- Wine tasting Tour
- Lunch Tour

Self-guided course Lunch on your own ※ Note 1

Arrive 10:50/Depart 13:50

From Yahiko Shrine

In front of the first entrance gate, Yahiko Shrine
Meet 10:00/Depart 10:10

Via Iwamuro Hot Springs Uwasekigata

※ Note 1 : The self-guided Course is expected to become crowded. Please lunch early.
※ Note 2 : The ¥500 Yahiko shopping coupon can be used at any store in Omotenashi Hiroba.
※ Note 3 : We offer shopping benefits.



1 Niigata Wine Coast

Located at the foot of Mt. Kakuda, surrounded by the sea, mountains, and sand. CAVE D'OCCI and five unique wineries gather here and make wines, using the special soil. There are also many hot springs, restaurants, and hotels.



※ Scheduled times are approximate. The route may change depending on the weather and traffic that day.

2 Omotenashi Hiroba

Yahiko's ¥500 shopping coupon (Usage limited to that day & the next) ※ Note 2

3 High Grade Store

※ Note 3

Tsubamesanjo Station (Tsubame Exit)
Arrive 16:00

Yahiko Hot Spring To your hotel

Tsubamesanjo Station (Tsubame Exit)
Arrive 16:40



2 Omotenashi Hiroba

Located almost in the center of Yahiko Hot Spring Town. There are a farmer's market store, food store and many kinds of dessert stores. And also there are hand and foot baths where you can take a break.



3 High Grade Store

You can shop about 3,000 cooking utensils used by professionals. A large selection of metal sake cups unique to Tsubame are also available. We offer shopping benefits.

Calendar : Open day : Wine tasting Tour closed **Monday - Saturday** (Closed on Sundays, public holidays, Obon [Aug.11-16], yearend/New Year holidays [Dec.21-Jan.5])
※ Apr.30-May2: Only lunch Tour and the Self-guided course are open (Wine tasting Tour is closed)

April	May	June	July	August	September
Sun. Mon. Tue. Wed. Thu. Fri. Sat.	Sun. Mon. Tue. Wed. Thu. Fri. Sat.	Sun. Mon. Tue. Wed. Thu. Fri. Sat.	Sun. Mon. Tue. Wed. Thu. Fri. Sat.	Sun. Mon. Tue. Wed. Thu. Fri. Sat.	Sun. Mon. Tue. Wed. Thu. Fri. Sat.
1 2 3 4 5 6	1 2 3 4	1	1 2 3 4 5 6	1 2 3	1 2 3 4 5 6 7
7 8 9 10 11 12 13	5 6 7 8 9 10 11	2 3 4 5 6 7 8	7 8 9 10 11 12 13	4 5 6 7 8 9 10	8 9 10 11 12 13 14
14 15 16 17 18 19 20	12 13 14 15 16 17 18	9 10 11 12 13 14 15	14 15 16 17 18 19 20	11 12 13 14 15 16 17	15 16 17 18 19 20 21
21 22 23 24 25 26 27	19 20 21 22 23 24 25	16 17 18 19 20 21 22	21 22 23 24 25 26 27	18 19 20 21 22 23 24	22 23 24 25 26 27 28
28 29 30	26 27 28 29 30 31	23 24 25 26 27 28 29	28 29 30 31	25 26 27 28 29 30 31	29 30
October	November	December	January 2025	February 2025	
Sun. Mon. Tue. Wed. Thu. Fri. Sat.	Sun. Mon. Tue. Wed. Thu. Fri. Sat.	Sun. Mon. Tue. Wed. Thu. Fri. Sat.	Sun. Mon. Tue. Wed. Thu. Fri. Sat.	Sun. Mon. Tue. Wed. Thu. Fri. Sat.	
1 2 3 4 5	1 2	1 2 3 4 5 6 7	1 2 3 4	1	
6 7 8 9 10 11 12	3 4 5 6 7 8 9	8 9 10 11 12 13 14	5 6 7 8 9 10 11	2 3 4 5 6 7 8	
13 14 15 16 17 18 19	10 11 12 13 14 15 16	15 16 17 18 19 20 21	12 13 14 15 16 17 18	9 10 11 12 13 14 15	
20 21 22 23 24 25 26	17 18 19 20 21 22 23	22 23 24 25 26 27 28	19 20 21 22 23 24 25	16 17 18 19 20 21 22	
27 28 29 30 31	24 25 26 27 28 29 30	29 30 31	26 27 28 29 30 31	23 24 25 26 27 28	



※ Photos and illustrations are just sample images.

Recommended for
ramen lovers!

Visit a metal bowl factory and eat ramen

Ramen taxi tour

There are 5 major kinds of ramen in Niigata. Among them, pork back fat ramen is the soul food that has filled the stomachs of many people working in local industries. You can take a taxi tour to see the factory that produces the ideal metal bowl that is light, not too hot and keeps the soup temperature, created from the ultimate playfulness of ramen-loving workers. You can taste ramen, too.

Fare Special price **¥21,000/taxi** (Tax included)
(Regular taxi that can fit up to 4 people)

Min. participants Minimum of 1 person

Reservation deadline 3 days before departure date
※Open on weekdays only

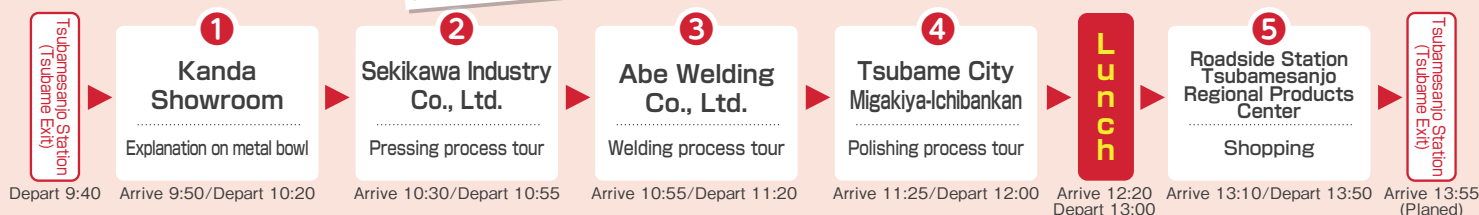


Tsubame's pork back fat ramen is certified as the "Aim for 100 Years! in the Future 100-Year Food Category" by the Agency for Cultural Affairs.

Eat pork back fat ramen, one of the top 5 kinds of ramen, in a metal bowl!!

Tsubame pork back fat ramen

The characteristics of Tsubame pork back fat ramen when delivering it to factory workers in the city are thick noodles that stay in the stomach, salty soup right for factory workers who do heavy work and sweat, and the covering pork back fat to keep the soup from cooling.

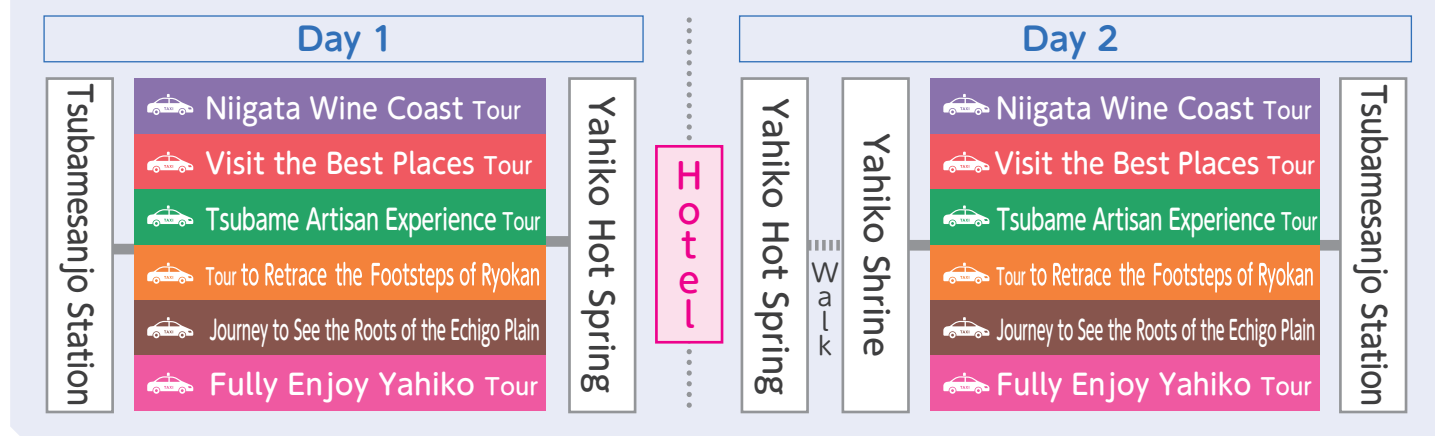


[Notes] ● Lunch is not included in the price. Please buy your own lunch. ● No tour conductor or guide will be on board. ● Please note that the time may change due to traffic conditions on the day. ● This is a sightseeing route. You cannot change your destination or stopover. If you wish to visit places not included in this route, there will be the normal charter fee. ● Regular work is done in factories. Please do not touch the products or enter areas other than designated areas because it is dangerous. ● No photographs inside the facilities. If you would like to take pictures, please check with the staff in charge. ● Smoking and drinking are prohibited inside the taxi. You are not allowed to take a tour under the influence of alcohol. ● Price includes taxi, guiding, and driver fees.

For more information



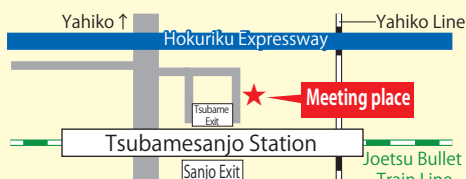
Example of using a sightseeing taxi 1 night 2 days



Information

● Regular or jumbo taxis will be used for sightseeing depending on the number of people booked. ● Itinerary times are approximate. They may change depending on the weather and traffic conditions. ● Please apply at least 3 days before departure. If you are staying close to Yahiko, Iwamuro or Tsubamesanjo, we accept reservations until 18:00 the day before except for Ramen taxi tour. ● If a reservation is made the day before, a guide does not accompany you. ● All prices include tax. ● Business hours may change or end on account of the destination facilities.

In front of the rotary,
Tsubame Exit,
Tsubamesanjo Station



In front of the
first entrance gate,
Yahiko Shrine



Contact Operating company: Chuetsu Traffic Co., Ltd. Business hours: 9:00-17:00
1-9-5 Kitanyugura, Sanjo City, Niigata Prefecture

Phone: +81-(0)256-38-2021 Fax: +81-(0)256-38-8850

Planned by: Tsubame/Yahiko Wide Area Tourism Cooperation Meeting Project ※ Photos and illustrations are just sample images.