

Travel at a reasonable price!



Travel around

[April 2025~February 2026]
Minimum number of participants: 2



Tsubame and Yahiko in a chartered

Price for one

(Same price for adults and children, tax included)

¥5,000

Niigata Wine Coast Tour

¥5,500

sightseeing taxi



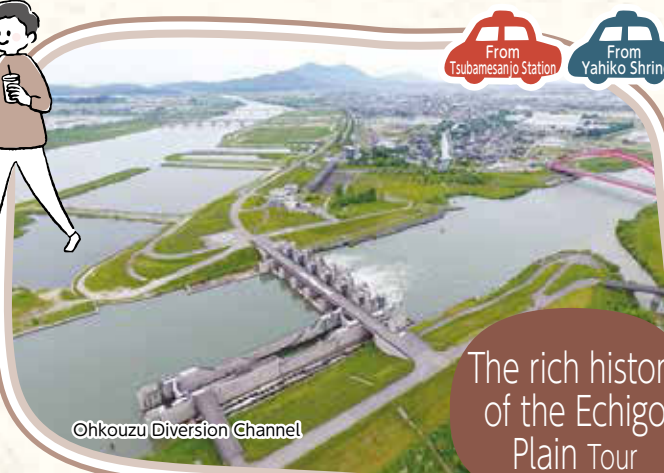
For more information



The Best Places Niigata Tour



Yahiko Shrine



Ohkouzu Diversion Channel

The rich history of the Echigo Plain Tour



Tsubame Artisan Experience Tour



Tojiro Open Factory



Ryokan Pilgrimage Tour



Gogo-an



Yahikoyama Ropeway

Fully Enjoy Yahiko Tour



CAVE D'OCCI WINERY

Niigata Wine Coast Tour

The best of Tsubame, Yahiko, and Teradomari!

The Best Places Niigata Tour

Tour Dates 2025 **Apr.1 (Tue.)-Feb.28 (Sat.)** 2026
Please see the calendar below.

Min. participants 2 people (Reservations required 3 days in advance)
※ Reservations can be made the day before from the hotel. No tour guides.

Price Price for one (Same price for adults and children, tax included)※ Lunch is not provided.
¥5,000 (The fare is the same for getting on/off on the way. Entry fee to the Tsubame Industrial Museum included.) (Free for infants, but no seats available for them)

Meeting place Time
From Tsubamesanjo Station In front of the rotary, Tsubame Exit, Tsubamesanjo Station 10:30
From Yahiko Shrine In front of the first entrance gate, Yahiko Shrine 9:50



From Tsubamesanjo Station	From Yahiko Shrine
<p>In front of the rotary, Tsubame Exit, Tsubamesanjo Station</p> <p>Meet 10:30/Depart 10:40</p>	<p>1 In front of the first entrance gate, Yahiko Shrine (With guide on premises) ※ Note 1</p> <p>Meet 9:50/Depart 11:00</p>
<p>2 SORAIRO Kugami Roadside Station</p> <p>ARRIVE 11:10/DEPART 12:20</p>	<p>3 Teradomari Fish Market</p> <p>ARRIVE 11:30/DEPART 12:05</p>
<p>3 SORAIRO Kugami Roadside Station</p> <p>ARRIVE 12:30/DEPART 13:30</p>	<p>4 Tsubame Industrial Museum</p> <p>ARRIVE 12:20/DEPART 13:20</p>
<p>4 Tsubame Industrial Museum</p> <p>ARRIVE 13:45/DEPART 14:20</p>	<p>Yahiko Hot Spring To your hotel</p> <p>ARRIVE 13:40/DEPART 14:50</p>
<p>Tsubamesanjo Station (Tsubame Exit)</p> <p>ARRIVE 14:50/DEPART 16:00</p>	<p>Tsubamesanjo Station (Tsubame Exit)</p> <p>ARRIVE 15:20</p>
<p>Yahiko Hot Spring To your hotel</p> <p>ARRIVE 16:30</p>	<p>Tsubamesanjo Station (Tsubame Exit)</p> <p>ARRIVE 15:50 via Yahiko</p>

※ Note 1 : August 11 to 16 and November 1 to 24 (The Chrysanthemum Festival periods): No guides on these days. Enjoy walking around on your own.
 ※ Note 2 : SORAIRO Kugami Roadside Station: Receive shopping coupon ¥500.
 ※ Note 3 : Additional charges for the experience at the Tsubame Industrial Museum.(Last entry at 16:00)



1 Yahiko Shrine

One of the best spiritual sites in Niigata Prefecture. The shrine has been called Oyahiko-sama since ancient times and is widely loved by many people.



2 SORAIRO Kugami Roadside Station

This is a new type of roadside station that you can stay at, serving as a hub for trekking and cycling as well as an outdoor and healing spot with barbecue facilities, day camping, and hot spring facilities. Visiting the roadside station is the purpose of the trip in itself.



3 Teradomari Fish Market



This popular spot is also known as the Ameyoko fish version because of its low prices, wide selection of products, and lively shouting.



4 Tsubame Industrial Museum



Introduces the history of Tsubame's 400 years of metalworking technology development since the Edo period. The works of living national treasures, a valuable collection kiseru tobacco pipes and spoons from all over the world are also on display.



■ Calendar ■ Open day Tuesday - Sunday (Mondays and yearend/New Year holidays [Dec.22-Jan.4]: Closed) ※ If Monday is a public holiday, we are open, but then closed on the following Tuesday.

April	May	June	July	August	September
Sun. Mon. Tue. Wed. Thu. Fri. Sat.	Sun. Mon. Tue. Wed. Thu. Fri. Sat.	Sun. Mon. Tue. Wed. Thu. Fri. Sat.	Sun. Mon. Tue. Wed. Thu. Fri. Sat.	Sun. Mon. Tue. Wed. Thu. Fri. Sat.	Sun. Mon. Tue. Wed. Thu. Fri. Sat.
1 2 3 4 5	1 2 3	1 2 3 4 5 6 7	1 2 3 4 5	1 2	1 2 3 4 5 6
6 7 8 9 10 11 12	4 5 6 7 8 9 10	8 9 10 11 12 13 14	6 7 8 9 10 11 12	3 4 5 6 7 8 9	7 8 9 10 11 12 13
13 14 15 16 17 18 19	11 12 13 14 15 16 17	15 16 17 18 19 20 21	13 14 15 16 17 18 19	10 11 12 13 14 15 16	14 15 16 17 18 19 20
20 21 22 23 24 25 26	18 19 20 21 22 23 24	22 23 24 25 26 27 28	20 21 22 23 24 25 26	17 18 19 20 21 22 23	21 22 23 24 25 26 27
27 28 29 30	25 26 27 28 29 30 31	29 30	27 28 29 30 31	24/31 25 26 27 28 29 30	28 29 30
October	November	December	January 2026	February 2026	
Sun. Mon. Tue. Wed. Thu. Fri. Sat.	Sun. Mon. Tue. Wed. Thu. Fri. Sat.	Sun. Mon. Tue. Wed. Thu. Fri. Sat.	Sun. Mon. Tue. Wed. Thu. Fri. Sat.	Sun. Mon. Tue. Wed. Thu. Fri. Sat.	
1 2 3 4	1	1 2 3 4 5 6	1 2 3	1 2 3 4 5 6 7	
5 6 7 8 9 10 11	2 3 4 5 6 7 8	7 8 9 10 11 12 13	4 5 6 7 8 9 10	8 9 10 11 12 13 14	
12 13 14 15 16 17 18	9 10 11 12 13 14 15	14 15 16 17 18 19 20	11 12 13 14 15 16 17	15 16 17 18 19 20 21	
19 20 21 22 23 24 25	16 17 18 19 20 21 22	21 22 23 24 25 26 27	18 19 20 21 22 23 24	22 23 24 25 26 27 28	
26 27 28 29 30 31	23/30 24 25 26 27 28 29	28 29 30 31	25 26 27 28 29 30 31		



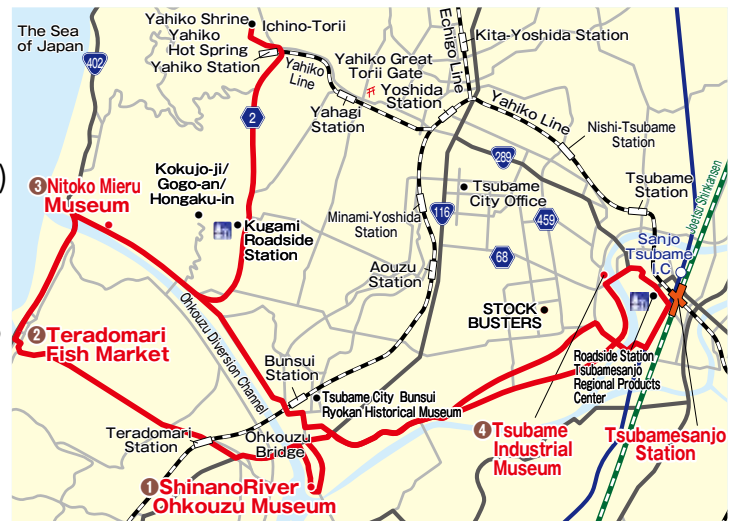
The rich history of the Echigo Plain Tour

Tour Dates 2025 **Apr.1 (Tue.)-Feb.28 (Sat.)** 2026
Please see the calendar below.

Min. participants 2 people (Reservations required 3 days in advance)
※ Reservations can be made the day before from the hotel. No tour guides.

Price Price for one (Same price for adults and children, tax included)※ Lunch is not provided.
¥5,000 (The fare is the same for getting on/off on the way. Entry fee to the Tsubame Industrial Museum is included.) (Free for infants, but no seats available for them)

Meeting place Time
From Tsubamesanjo Station: In front of the rotary, Tsubame Exit, Tsubamesanjo Station 10:30
From Yahiko Shrine: In front of the first entrance gate, Yahiko Shrine 10:30



※ Scheduled times are approximate. The route may change depending on the weather and traffic that day.



※ Note 1 : Depending on the reservation, a guide may not accompany the visitors at the ShinanoRiver Ohkouzu Museum and Nitoko Mieru Museum.
※ Note 2 : Additional charges for the experience at the Tsubame Industrial Museum. (Last entry at 16:00)



1 ShinanoRiver Ohkouzu Museum

The Ohkouzu Diversion Channel is deeply related to Tsubame's industry and continues to protect the Echigo Plain even today. A trolley that was used 100 years ago is displayed here, and you can experience the Ohkouzu Diversion Channel with a realistic flood simulation. You can also enjoy a 360-degree view from the observation room on the 4th floor.



3 Nitoko Mieru Museum

Panels and videos provide an easy-to-understand introduction to the Ohkouzu Diversion Channel Renovation Project, a large-scale project to widen the estuary of the Ohkouzu Diversion Channel. Don't miss the Augmented Reality (AR) tablet that enables you to see the completed image when you hold it over the map.



4 Tsubame Industrial Museum

You can learn metalworking here, a rare experience even in Japan. Act like a Tsubame artisan and freely hammer patterns on a pure copper tumbler, or make a sake cup.

Calendar Open day Tuesday - Sunday (Mondays and yearend/New Year holidays [Dec.21-Jan.5]: Closed)※ If Monday is a public holiday, we are open, but then closed on the following Tuesday.

April	May	June	July	August	September
Sun. Mon. Tue. Wed. Thu. Fri. Sat.	Sun. Mon. Tue. Wed. Thu. Fri. Sat.	Sun. Mon. Tue. Wed. Thu. Fri. Sat.	Sun. Mon. Tue. Wed. Thu. Fri. Sat.	Sun. Mon. Tue. Wed. Thu. Fri. Sat.	Sun. Mon. Tue. Wed. Thu. Fri. Sat.
1 2 3 4 5	1 2 3	1 2 3 4 5 6 7	1 2 3 4 5	1 2	1 2 3 4 5 6
6 7 8 9 10 11 12	4 5 6 7 8 9 10	8 9 10 11 12 13 14	6 7 8 9 10 11 12	3 4 5 6 7 8 9	7 8 9 10 11 12 13
13 14 15 16 17 18 19	11 12 13 14 15 16 17	15 16 17 18 19 20 21	13 14 15 16 17 18 19	10 11 12 13 14 15 16	14 15 16 17 18 19 20
20 21 22 23 24 25 26	18 19 20 21 22 23 24	22 23 24 25 26 27 28	20 21 22 23 24 25 26	17 18 19 20 21 22 23	21 22 23 24 25 26 27
27 28 29 30	25 26 27 28 29 30 31	29 30	27 28 29 30 31	24/31 25 26 27 28 29 30	28 29 30
October	November	December	January 2026	February 2026	
Sun. Mon. Tue. Wed. Thu. Fri. Sat.	Sun. Mon. Tue. Wed. Thu. Fri. Sat.	Sun. Mon. Tue. Wed. Thu. Fri. Sat.	Sun. Mon. Tue. Wed. Thu. Fri. Sat.	Sun. Mon. Tue. Wed. Thu. Fri. Sat.	
1 2 3 4	1	1 2 3 4 5 6	1 2 3	1 2 3 4 5 6 7	
5 6 7 8 9 10 11	2 3 4 5 6 7 8	7 8 9 10 11 12 13	4 5 6 7 8 9 10	8 9 10 11 12 13 14	
12 13 14 15 16 17 18	9 10 11 12 13 14 15	14 15 16 17 18 19 20	11 12 13 14 15 16 17	15 16 17 18 19 20 21	
19 20 21 22 23 24 25	16 17 18 19 20 21 22	21 22 23 24 25 26 27	18 19 20 21 22 23 24	22 23 24 25 26 27 28	
26 27 28 29 30 31	23/30 24 25 26 27 28 29	28 29 30 31	25 26 27 28 29 30 31		



A fulfilling journey where you can explore the history of craftsmanship!

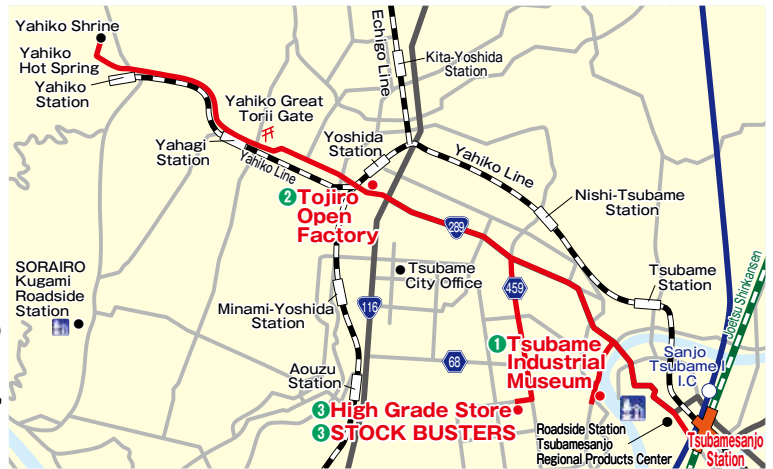
Tsubame Artisan Experience Tour

Tour Dates 2025 **Apr.1 (Tue.)-Feb.28 (Sat.)** 2026
Please see the calendar below.
※If there are events, this tour will not be held.
※Closed on factory holidays

Min. participants 2 people (Reservations required 3 days in advance)
※Reservations can be made the day before from the hotel.
No tour guides.

Price Price for one (Same price for adults and children, tax included)※ Lunch is not provided.
¥5,000 (The fare is the same for getting on/off on the way.
Entry fee to the Tsubame Industrial Museum included.)
(Free for infants, but no seats available for them)

Meeting place Time
From Tsubamesanjo Station In front of the rotary, Tsubame Exit, Tsubamesanjo Station 10:30
From Yahiko Shrine In front of the first entrance gate, Yahiko Shrine 10:10



※ Scheduled times are approximate. The route may change depending on the weather and traffic that day.

From Tsubamesanjo Station	In front of the rotary, Tsubame Exit, Tsubamesanjo Station Meet 10:30/Depart 10:40	1 Tsubame Industrial Museum Small gift ※ Note 1	Lunch on your own Arrive 12:30/Depart 12:30	2 Tojiro Open Factory Arrive 13:40/Depart 14:40	3 High Grade Store or STOCK BUSTERS Arrive 14:55/Depart 15:25	Tsubamesanjo Station (Tsubame Exit) Arrive 15:35 Yahiko Hot Spring To your hotel	Tsubamesanjo Station (Tsubame Exit) Arrive 16:15
From Yahiko Shrine	In front of the first entrance gate, Yahiko Shrine Meet 10:10/Depart 10:20						

●Please do not touch the products in the factory ●You are not allowed to take a tour while under the influence of alcohol.

※ Note 1: Additional charge for the workshop at the Tsubame Industrial Museum.

※ The small gift is waiting for you at the Tsubame Industrial Museum.

1 Tsubame Industrial Museum [Workshop]

Create unique patterns by hammering the surface of a pure copper tumbler and customize your own tumbler.



A Pure copper tumbler
Tsukiki Copperware workshop

Required time: about 30 minutes

Create unique patterns by hammering the surface of a pure copper tumbler and customize your own tumbler.



B Tin sake cup
making workshop

Required time: 30-40 minutes

Create your own sake cup from a round tin plate using a mallet.



C Titanium spoon
Oxidation coloring workshop

Required time: 3-5 minutes

Apply an electric current to titanium to create an oxide film which colors the titanium. The color of titanium varies depending on the voltage.

2 Tojiro Open Factory



A facility for touring a cutlery factory that handles integrated production of composite knives. The work process is open to visitors. A wide variety of knives for cooking, business use, and household use are displayed and sold.



3 High Grade Store or STOCK BUSTERS



Approximately 3,000 kitchen utensils and high-quality kitchen products used by professionals, along with Tsubame's unique metal bowls and cutlery, are displayed and available for purchase. Take advantage of our exclusive shopping benefit.



This outlet shop offers products that are unavailable through regular channels, including discontinued models from trading companies and manufacturers in the Tsubame-Sanjo area, all at exceptionally low prices.
※Closed on the second and fourth Tuesdays of each month, except in August and November.



■ Calendar (Open day) Tuesday - Friday (Closed on Mondays, weekends, national holidays, Obon [Aug.11-16], and yearend/New Year holidays [Dec.21-Jan.5])
※ If there are events, this tour will not be held.

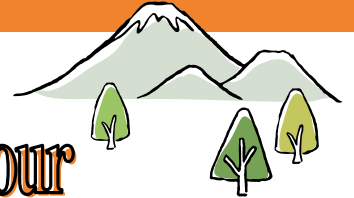
April	May	June	July	August	September
Sun. Mon. Tue. Wed. Thu. Fri. Sat.	Sun. Mon. Tue. Wed. Thu. Fri. Sat.	Sun. Mon. Tue. Wed. Thu. Fri. Sat.	Sun. Mon. Tue. Wed. Thu. Fri. Sat.	Sun. Mon. Tue. Wed. Thu. Fri. Sat.	Sun. Mon. Tue. Wed. Thu. Fri. Sat.
1 2 3 4 5	1 2 3	1 2 3 4 5 6 7	1 2 3 4 5	1 2	1 2 3 4 5 6
6 7 8 9 10 11 12	4 5 6 7 8 9 10	8 9 10 11 12 13 14	6 7 8 9 10 11 12	3 4 5 6 7 8 9	7 8 9 10 11 12 13
13 14 15 16 17 18 19	11 12 13 14 15 16 17	15 16 17 18 19 20 21	13 14 15 16 17 18 19	10 11 12 13 14 15 16	14 15 16 17 18 19 20
20 21 22 23 24 25 26	18 19 20 21 22 23 24	22 23 24 25 26 27 28	20 21 22 23 24 25 26	17 18 19 20 21 22 23	21 22 23 24 25 26 27
27 28 29 30	25 26 27 28 29 30 31	29 30	27 28 29 30 31	24/31 25 26 27 28 29 30	28 29 30
October	November	December	January 2026	February 2026	
Sun. Mon. Tue. Wed. Thu. Fri. Sat.	Sun. Mon. Tue. Wed. Thu. Fri. Sat.	Sun. Mon. Tue. Wed. Thu. Fri. Sat.	Sun. Mon. Tue. Wed. Thu. Fri. Sat.	Sun. Mon. Tue. Wed. Thu. Fri. Sat.	
1 2 3 4	1	1 2 3 4 5 6	1 2 3	1 2 3 4 5 6 7	
5 6 7 8 9 10 11	2 3 4 5 6 7 8	7 8 9 10 11 12 13	4 5 6 7 8 9 10	8 9 10 11 12 13 14	
12 13 14 15 16 17 18	9 10 11 12 13 14 15	14 15 16 17 18 19 20	11 12 13 14 15 16 17	15 16 17 18 19 20 21	
19 20 21 22 23 24 25	16 17 18 19 20 21 22	21 22 23 24 25 26 27	18 19 20 21 22 23 24	22 23 24 25 26 27 28	
26 27 28 29 30 31	23/30 24 25 26 27 28 29	28 29 30 31	25 26 27 28 29 30 31		



Make the most of the historic sites and nature of Tsubame!



Ryokan Pilgrimage Tour



Tour Dates

2025 Apr. 1 (Tue.) - Nov. 30 (Sun.)

Please see the calendar below.

Min. participants

2 people

(If you would like a guided tour, please make a reservation at least 14 days in advance.)

※ Reservations must be made at least 3 days in advance if you are going without a guide.
※ Reservations can be made the day before from the hotel. No tour guides.

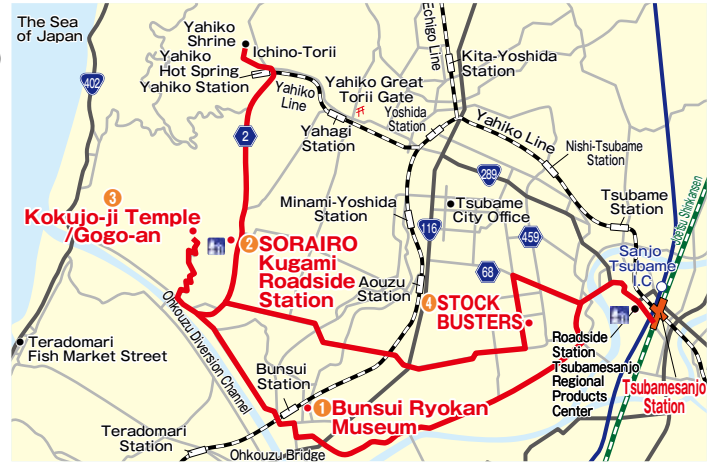
Price

Price for one (Same price for adults and children, tax included)※ Lunch is not provided.
¥5,000 (Admission to the museum and Kokujo-ji Temple Treasure Hall included)
(Free for infants, but no seats available for them)

Meeting place Time

From Tsubamesanjo Station
In front of the rotary, Tsubame Exit, Tsubamesanjo Station 10:30

From Yahiko Shrine
In front of the first entrance gate, Yahiko Shrine 9:50



※ Scheduled times are approximate. The route may change depending on the weather and traffic that day.

From Tsubamesanjo Station	In front of the rotary, Tsubame Exit, Tsubamesanjo Station Meet 10:30/Depart 10:40	1 Bunsui Ryokan Museum Arrive 11:05/Depart 11:35	2 SORAIRO Kugami Roadside Station SORAIRO Kugami Roadside Station shopping coupon ¥500 for use on the day only ※ Note 1 Lunch on your own Arrive 11:45/Depart 12:55	3 Kokujo-ji Temple/Gogo-an (With guide) Arrive 13:05/Depart 14:25	Tsubame-Sanjo Factory Outlet 4 STOCK BUSTERS Arrive 14:45/Depart 15:15	Tsubamesanjo Station (Tsubame Exit) Arrive 15:30 Yahiko Hot Spring To your hotel
From Yahiko Shrine	In front of the first entrance gate, Yahiko Shrine Meet 9:50/Depart 10:00	3 Kokujo-ji Temple/Gogo-an (With guide) Arrive 10:20/Depart 11:40	2 SORAIRO Kugami Roadside Station SORAIRO Kugami Roadside Station shopping coupon ¥500 for use on the day only ※ Note 1 Lunch on your own Arrive 11:50/Depart 13:00	1 Bunsui Ryokan Museum Arrive 13:10/Depart 13:40	Tsubame-Sanjo Factory Outlet 4 STOCK BUSTERS Arrive 14:00/Depart 14:30	Yahiko Hot Spring To your hotel Arrive 14:50 Tsubamesanjo Station (Tsubame Exit) Arrive 15:20 via Yahiko

● You will be walking along mountain paths along the way. Please wear appropriate clothing and shoes.

※ Note 1 : You can use the SORAIRO Kugami Roadside Station shopping coupons at the product sales areas and restaurants.



1 Bunsui Ryokan Museum

Relics, writings, and related materials of Ryokan, from when he lived in Gogo-an and a hut at Ootogo Shrine are on display. Ryokan who loved poetry, songs, and calligraphy, was admired by people and lived in nature. At special exhibitions in spring and autumn, nationally and prefecturally designated cultural properties are displayed here.



3 Kokujo-ji Temple/Gogo-an

Kokujo-ji Temple: The oldest temple in Echigo, built in 709, was founded by Konchi Daitoku after he received a prophecy from Yahiko Shrine.

Gogo-an: The hermitage where Ryokan stayed after completing his pilgrimage around Japan and returning to Echigo. The name Gogo-an comes from the monk Bangen, who rebuilt Kokujo-ji Temple, and was given a daily allowance of five go of rice, which is about 750 grams.



Calendar

Open day

Tuesday - Sunday

Open on public holidays that fall on Mondays, but then closed the following Tuesday. Closed on the second and fourth Tuesdays of every month except in August and November.

April	May	June	July
Sun. Mon. Tue. Wed. Thu. Fri. Sat.	Sun. Mon. Tue. Wed. Thu. Fri. Sat.	Sun. Mon. Tue. Wed. Thu. Fri. Sat.	Sun. Mon. Tue. Wed. Thu. Fri. Sat.
1 2 3 4 5	1 2 3	1 2 3 4 5 6 7	1 2 3 4 5
6 7 8 9 10 11 12	4 5 6 7 8 9 10	8 9 10 11 12 13 14	6 7 8 9 10 11 12
13 14 15 16 17 18 19	11 12 13 14 15 16 17	15 16 17 18 19 20 21	13 14 15 16 17 18 19
20 21 22 23 24 25 26	18 19 20 21 22 23 24	22 23 24 25 26 27 28	20 21 22 23 24 25 26
27 28 29 30	25 26 27 28 29 30 31	29 30	27 28 29 30 31
August	September	October	November
Sun. Mon. Tue. Wed. Thu. Fri. Sat.	Sun. Mon. Tue. Wed. Thu. Fri. Sat.	Sun. Mon. Tue. Wed. Thu. Fri. Sat.	Sun. Mon. Tue. Wed. Thu. Fri. Sat.
1 2	1 2 3 4 5 6	1 2 3 4	1
3 4 5 6 7 8 9	7 8 9 10 11 12 13	5 6 7 8 9 10 11	2 3 4 5 6 7 8
10 11 12 13 14 15 16	14 15 16 17 18 19 20	12 13 14 15 16 17 18	9 10 11 12 13 14 15
17 18 19 20 21 22 23	21 22 23 24 25 26 27	19 20 21 22 23 24 25	16 17 18 19 20 21 22
24 25 26 27 28 29 30	28 29 30	26 27 28 29 30 31	23 24 25 26 27 28 29



4 Tsubame-Sanjo Factory Outlet STOCK BUSTERS

This outlet shop offers products that are unavailable through regular channels, including discontinued models from trading companies and manufacturers in the Tsubame-Sanjo area, all at exceptionally low prices.



Fully experience the charm of Yahiko!

Fully Enjoy Yahiko Tour

Tour Dates 2025 **Apr. 1 (Tue.) - Nov. 30 (Sun.)**
Please see the calendar below.

Min. participants **2 people** (Reservations required 3 days in advance)
※ Reservations can be made the day before from the hotel. No tour guides.

Price Price for one (Same price for adults and children, tax included) ※ Lunch is not provided.
¥5,000 (The fare is the same for getting on/off on the way.)
(Free for infants, but no seats available for them)

Meeting place Time
From Tsubamesanjo Station: In front of the rotary, Tsubame Exit, Tsubamesanjo Station 10:30
From Yahiko Shrine: In front of the first entrance gate, Yahiko Shrine 9:50



From Tsubamesanjo Station	<p>In front of the rotary, Tsubame Exit, Tsubamesanjo Station</p> <p>Meet 10:30/Depart 10:40</p>	<p>1 Yahiko Shrine (With guide on premises) ※ Note 1</p> <p>Arrive 11:10/Depart 12:20</p>	<p>2 Omotenashi Hiroba</p> <p>Yahiko shopping coupon ¥500 (Usage limited to that day & the next) ※ Note 2</p> <p>Lunch on your own</p> <p>Arrive 12:25/Depart 13:25</p>	<p>3 Summit of Mt. Yahiko</p> <p>Enjoy the Climbing Car on the ropeway on your return trip. ※ Note 3</p> <p>Arrive 13:55/Depart 14:45</p>	<p>4 Yayoi Liquor Store ※ Note 4</p> <p>Arrive 15:10/Depart 15:40</p>	<p>5 Hand-Hammering Studio Seigado</p> <p>Arrive 15:45/Depart 16:15</p>	<p>Tsubamesanjo Station (Tsubame Exit)</p> <p>Arrive 16:45</p> <p>Yahiko Hot Spring To your hotel</p> <p>Arrive 16:25</p>
From Yahiko Shrine	<p>1 In front of the first entrance gate, Yahiko Shrine (With guide on premises) ※ Note 1</p> <p>Meet 9:50/Depart 11:00</p>	<p>3 Summit of Mt. Yahiko</p> <p>Enjoy the Climbing Car on the ropeway on your outbound trip. ※ Note 3</p> <p>Arrive 11:20/Depart 12:20</p>	<p>2 Omotenashi Hiroba</p> <p>Yahiko shopping coupon ¥500 (Usage limited to that day & the next) ※ Note 2</p> <p>Lunch on your own</p> <p>Arrive 12:40/Depart 14:00</p>	<p>5 Hand-Hammering Studio Seigado</p> <p>Arrive 14:05/Depart 14:35</p>	<p>4 Yayoi Liquor Store ※ Note 4</p> <p>Arrive 14:40/Depart 15:10</p>	<p>Yahiko Hot Spring To your hotel</p> <p>Arrive 15:15</p>	<p>Tsubamesanjo Station (Tsubame Exit)</p> <p>Arrive 15:45</p>

※Note 1 : August 11 to 16 (Obon period) and November 1 to 24 (The Chrysanthemum Festival period): No guides on these days. Enjoy walking around on your own.
 ※Note 2 : The Yahiko shopping coupon ¥500 can be used at the Ropeway, Seigado, Yayoi Liquor Store, or Omotenashi Hiroba.
 ※Note 3 : The ropeway and Climbing Car fee are to be paid by the visitors (¥800 + ¥220 = ¥1,020 in total).
 ※Note 4 : Alcoholic tasting is available for a fee. It may be temporarily closed at times.



3 Summit of Mt. Yahiko

Altitude 634m. A ropeway runs from the foot of the mountain to the summit. The 100m-high Panorama Tower at the top has an observatory that rotates 360 degrees as it rises, offering a magnificent view of the Sea of Japan and the Echigo Plain.



4 Yayoi Liquor Store

An old folk house was relocated and transformed into a modern store designed by German architect Karl Bengs. The store offers a wide selection of local sake and wine. Visitors can taste and choose sake, and also enjoy craft beer from Yahiko Brewing.



5 Hand-Hammering Studio Seigado

This workshop located at the foot of Mt. Yahiko uses Tsubame's traditional metal hammering techniques to create items from everyday tableware to metal arts. Enjoy the refined crafts made with their unique coloring techniques.

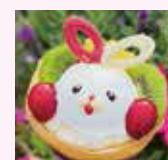
Calendar : Open day Thursday-Tuesday ※ Closed every Wednesday

April	May	June	July
Sun. Mon. Tue. Wed. Thu. Fri. Sat.	Sun. Mon. Tue. Wed. Thu. Fri. Sat.	Sun. Mon. Tue. Wed. Thu. Fri. Sat.	Sun. Mon. Tue. Wed. Thu. Fri. Sat.
1 2 3 4 5	1 2 3	1 2 3 4 5 6 7	1 2 3 4 5
6 7 8 9 10 11 12	4 5 6 7 8 9 10	8 9 10 11 12 13 14	6 7 8 9 10 11 12
13 14 15 16 17 18 19	11 12 13 14 15 16 17	15 16 17 18 19 20 21	13 14 15 16 17 18 19
20 21 22 23 24 25 26	18 19 20 21 22 23 24	22 23 24 25 26 27 28	20 21 22 23 24 25 26
27 28 29 30	25 26 27 28 29 30 31	29 30	27 28 29 30 31
August	September	October	November
Sun. Mon. Tue. Wed. Thu. Fri. Sat.	Sun. Mon. Tue. Wed. Thu. Fri. Sat.	Sun. Mon. Tue. Wed. Thu. Fri. Sat.	Sun. Mon. Tue. Wed. Thu. Fri. Sat.
1 2	1 2 3 4 5 6	1 2 3 4	1
3 4 5 6 7 8 9	7 8 9 10 11 12 13	5 6 7 8 9 10 11	2 3 4 5 6 7 8
10 11 12 13 14 15 16	14 15 16 17 18 19 20	12 13 14 15 16 17 18	9 10 11 12 13 14 15
17 18 19 20 21 22 23	21 22 23 24 25 26 27	19 20 21 22 23 24 25	16 17 18 19 20 21 22
24 25 26 27 28 29 30	28 29 30	26 27 28 29 30 31	23 24 25 26 27 28 29

Recommended gourmet meals

Fish Broth Sanuki Noodles

Available in Omotenashi Hiroba. Udon noodles made with flying fish broth from Awashimaura Village, Niigata Prefecture, which has exchanges with Yahiko Village, made with traditional Sanuki method from Kagawa.



Miko Pyon Crepe

A crepe with the motif of Miko Pyon, which is Yahiko Village's mascot character. Available at CREPESHOP 3 o'clock in Omotenashi Hiroba.



Niigata Wine Coast Tour

Tour Dates

2025
Apr.1 (Tue.)-Feb.28 (Sat.)
Please see the calendar below.

Min. participants

2 people (Reservations required 3 days in advance)
※ Reservations can be made the day before from the hotel.

Price

Price for one (Same price for adults and children, tax included) ※ Lunch is not provided.
Self-guided course ¥5,500 (The fare is the same for getting on/off on the way.)
(Free for infants, but no seats available for them) ※ Note 1

Optional tour to a well-known winery **CAVE D'OCCI WINERY tour**

The following tours are also available for an additional fee. (Reservations required)

Wine Tasting Tour **¥2,200** (Tax included) Wine Tasting & Lunch Tour **¥5,500** (Tax included)
※ Minors cannot participate ※ Minors and preschoolers cannot participate
※ Option prices are subject to change.

Meeting place Time

From Tsubamesanjo Station In front of the rotary, Tsubame Exit, Tsubamesanjo Station 9:50
From Yahiko Shrine In front of the first entrance gate, Yahiko Shrine 10:00

※ Passengers using Iwamuro Hot Springs can board on the way at each hotel in the Iwamuro Hot Springs area (Departure 10:20).

From Tsubamesanjo Station

In front of the rotary, Tsubame Exit, Tsubamesanjo Station
Meet 9:50/Depart 10:00

Via Iwamuro Hot Springs Uwasekigata

From Yahiko Shrine

In front of the first entrance gate, Yahiko Shrine
Meet 10:00/Depart 10:10

Via Iwamuro Hot Springs Uwasekigata

1 Niigata Wine Coast

CAVE D'OCCI WINERY tour
Wine Tasting Tour
Wine Tasting & Lunch Tour

Self-guided course **Lunch on your own** ※ Note 1

Arrive 10:50/Depart 13:30

Via Echigo Nanaura Seaside Line

2 Omotenashi Hiroba

Yahiko shopping coupon ¥500
Usage limited to that day & the next
※ Note 2

Arrive 14:30/Depart 15:00

3 High Grade Store or STOCK BUSTERS

Arrive 15:20/Depart 15:50

Tsubamesanjo Station (Tsubame Exit)

Arrive 16:00

Yahiko Hot Spring To your hotel

Arrive 16:10

Tsubamesanjo Station (Tsubame Exit)
Arrive 16:40

※ Note 1 : The self-guided course is expected to become crowded. Please lunch early.

※ Note 2 : The Yahiko shopping coupon ¥500 can be used at any store in Omotenashi Hiroba.



1 Niigata Wine Coast

Located at the foot of Mt. Kakuda, surrounded by the sea, mountains, and sand. CAVE D'OCCI and five unique wineries gather here to make wines, using the special soil. There are also many hot springs, restaurants, and hotels.



2 Omotenashi Hiroba

Located almost in the center of Yahiko Hot Springs. This area is lined with stores selling fruit sandwiches, crepes and other sweets as well as the famous minced squid. There are direct sales stores, a food court, and a foot bath and hand bath with water flowing directly from the Yujinja Hot Spring source.



3 High Grade Store or STOCK BUSTERS



You can shop from a selection of about 3,000 professional-grade cooking utensils. A large variety of unique metal sake cups, a specialty of Tsubame, is also available. Enjoy exclusive shopping benefits as well.



This outlet shop offers products that are unavailable through regular channels, including discontinued models from trading companies and manufacturers in the Tsubame-Sanjo area, all at exceptionally low prices.
※ Closed on the second and fourth Tuesdays of each month, except in August and November.



Calendar

Open day

Wine Tasting Tour closed

Monday-Saturday (Closed on Sundays, public holidays, Obon [Aug.11-16], yearend/New Year holidays [Dec.21-Jan.4])

※ Apr.30-May2: Only Wine Tasting & Lunch Tour and the Self-guided course are open (Wine Tasting Tour is closed)

Sun.	Mon.	Tue.	Wed.	Thu.	Fri.	Sat.
		1	2	3	4	5
6	7	8	9	10	11	12
13	14	15	16	17	18	19
20	21	22	23	24	25	26
27	28	29	30			

Sun.	Mon.	Tue.	Wed.	Thu.	Fri.	Sat.
			1	2	3	
4	5	6	7	8	9	10
11	12	13	14	15	16	17
18	19	20	21	22	23	24
25	26	27	28	29	30	31

Sun.	Mon.	Tue.	Wed.	Thu.	Fri.	Sat.
1	2	3	4	5	6	7
8	9	10	11	12	13	14
15	16	17	18	19	20	21
22	23	24	25	26	27	28
29	30					

Sun.	Mon.	Tue.	Wed.	Thu.	Fri.	Sat.
		1	2	3	4	5
6	7	8	9	10	11	12
13	14	15	16	17	18	19
20	21	22	23	24	25	26
27	28	29	30	31		

Sun.	Mon.	Tue.	Wed.	Thu.	Fri.	Sat.
					1	2
3	4	5	6	7	8	9
10	11	12	13	14	15	16
17	18	19	20	21	22	23
24	25	26	27	28	29	30

Sun.	Mon.	Tue.	Wed.	Thu.	Fri.	Sat.
						1
2	3	4	5	6	7	8
9	10	11	12	13	14	15
16	17	18	19	20	21	22
23	24	25	26	27	28	29

Sun.	Mon.	Tue.	Wed.	Thu.	Fri.	Sat.
				1	2	3
4	5	6	7	8	9	10
11	12	13	14	15	16	17
18	19	20	21	22	23	24
25	26	27	28	29	30	31

Sun.	Mon.	Tue.	Wed.	Thu.	Fri.	Sat.
					1	
2	3	4	5	6	7	8
9	10	11	12	13	14	15
16	17	18	19	20	21	22
23	24	25	26	27	28	29

Sun.	Mon.	Tue.	Wed.	Thu.	Fri.	Sat.
1	2	3	4	5	6	
7	8	9	10	11	12	13
14	15	16	17	18	19	20
21	22	23	24	25	26	27
28	29	30	31			

Sun.	Mon.	Tue.	Wed.	Thu.	Fri.	Sat.
					1	2
3	4	5	6	7	8	9
10	11	12	13	14	15	16
17	18	19	20	21	22	23
24	25	26	27	28	29	30

Sun.	Mon.	Tue.	Wed.	Thu.	Fri.	Sat.
						1
2	3	4	5	6	7	8
9	10	11	12	13	14	15
16	17	18	19	20	21	22
23	24	25	26	27	28	29



**Recommended
for ramen lovers!**

Visit a metal bowl factory and eat ramen

Ramen taxi tour plan

There are 5 major kinds of ramen in Niigata. Among them, pork back fat ramen is the soul food that has filled the stomachs of many people working in local industries. You can take a taxi tour to see the factory that produces the ideal metal bowl that is light, not too hot and keeps the soup temperature, created from the ultimate playfulness of ramen-loving workers. You can taste ramen, too.



Fare Special price **¥21,000/taxi** (Tax included)
(Regular taxi that can fit up to 4 people)

Min. participants Minimum of 1 person

Reservation deadline 3 days before departure date
※Open on weekdays only



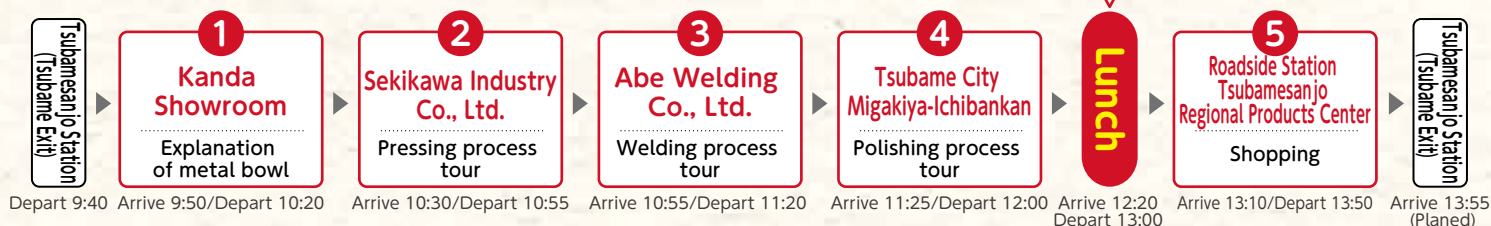
**Eat pork back fat ramen,
one of the top
5 kinds of ramen,
in a metal bowl!!**



Tsubame pork back fat ramen

The characteristics of Tsubame pork back fat ramen when delivering it to factory workers in the city are thick noodles that stay in the stomach, salty soup right for factory workers who do heavy work and sweat, and the covering pork back fat to keep the soup from cooling.

Tsubame's pork back fat ramen is certified as the
"Aim for 100 Years! in the Future 100-Year Food Category"
by the Agency for Cultural Affairs.

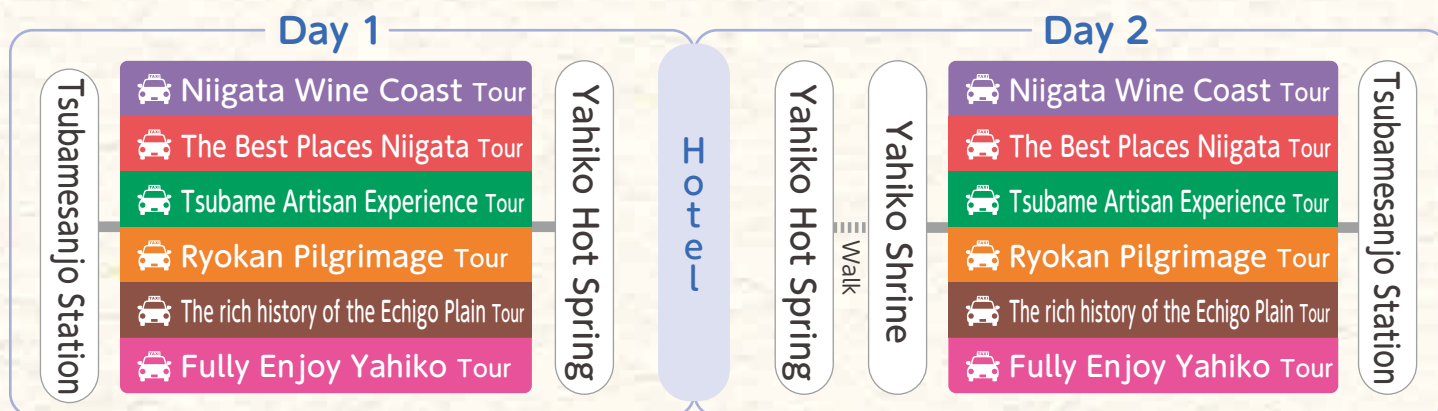


[Notes] ● Lunch is not included in the price. Please buy your own lunch. ● No tour conductor or guide will be on board. ● Please note that the time may change due to traffic conditions on the day. ● This is a sightseeing route. You cannot change your destination or stopover. If you wish to visit places not included in this route, there will be the normal charter fee. ● Regular work is done in factories. Please do not touch the products or enter areas other than designated areas because it is dangerous. ● No photographs inside the facilities. If you would like to take pictures, please check with the staff in charge. ● Smoking and drinking are prohibited inside the taxi. You are not allowed to take a tour under the influence of alcohol. ● Price includes taxi, guiding, and driver fees.

For more
information

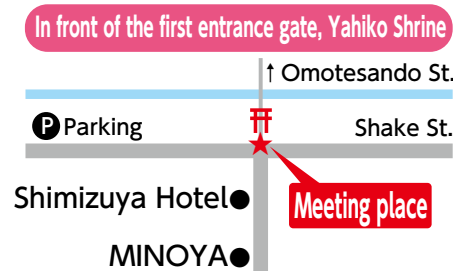
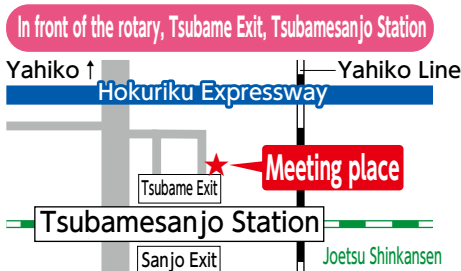


Example of using a sightseeing taxi 1 night 2 days



Information

●Regular or jumbo taxis will be used for sightseeing depending on the number of people booked.●Itinerary times are approximate. They may change depending on the weather and traffic conditions.●Please apply at least 3 days before departure. If you are staying close to Yahiko, Iwamuro or Tsubamesanjo, we accept reservations until 18:00 the day before except for Ramen taxi tourists.●If a reservation is made the day before, a guide does not accompany you.●All prices include tax.●Business hours may vary depending on the conditions at the destination facilities.



Contact

Operating company : Chuetsu Traffic Co., Ltd. Business hours: 9:00-17:00
1-9-5 Kitanyugura, Sanjo City, Niigata Prefecture

Phone : +81-(0)256-38-2021

Fax : +81-(0)256-38-8850

We also handle inquiries via email, but reservations are only available by phone.

tanabe@chuetsu-traffic.com

Planned by: Tsubame-Yahiko Wide Area Tourism Cooperation Conference

※Photographs and illustrations are provided for reference purposes only.